



# TECHNIQUES TRANSPARENTES

TECHNIQUES DU VERRE APPLIQUÉES AU DESIGN ET À L'ARCHITECTURE

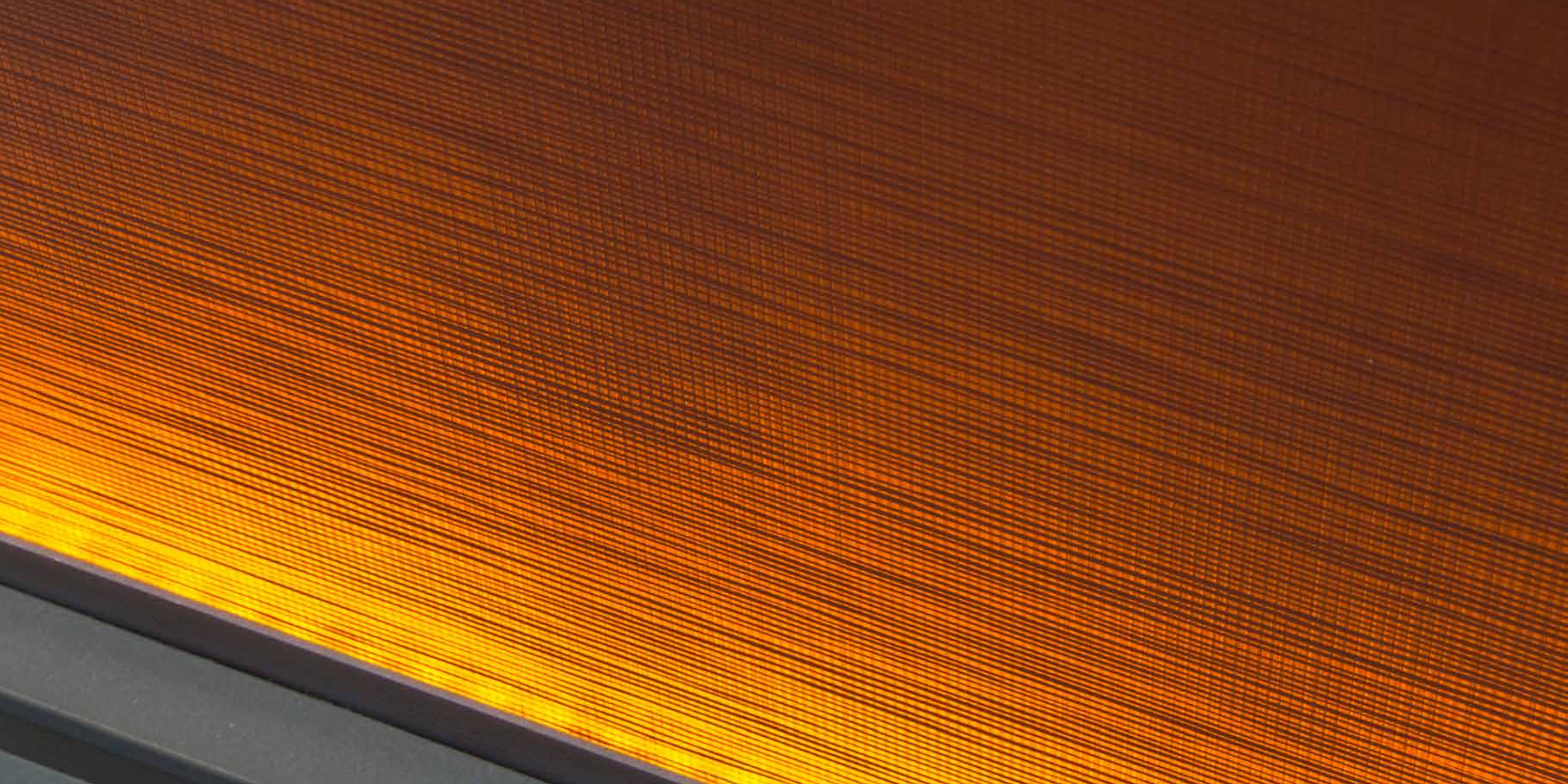
RECHERCHES / PROJETS

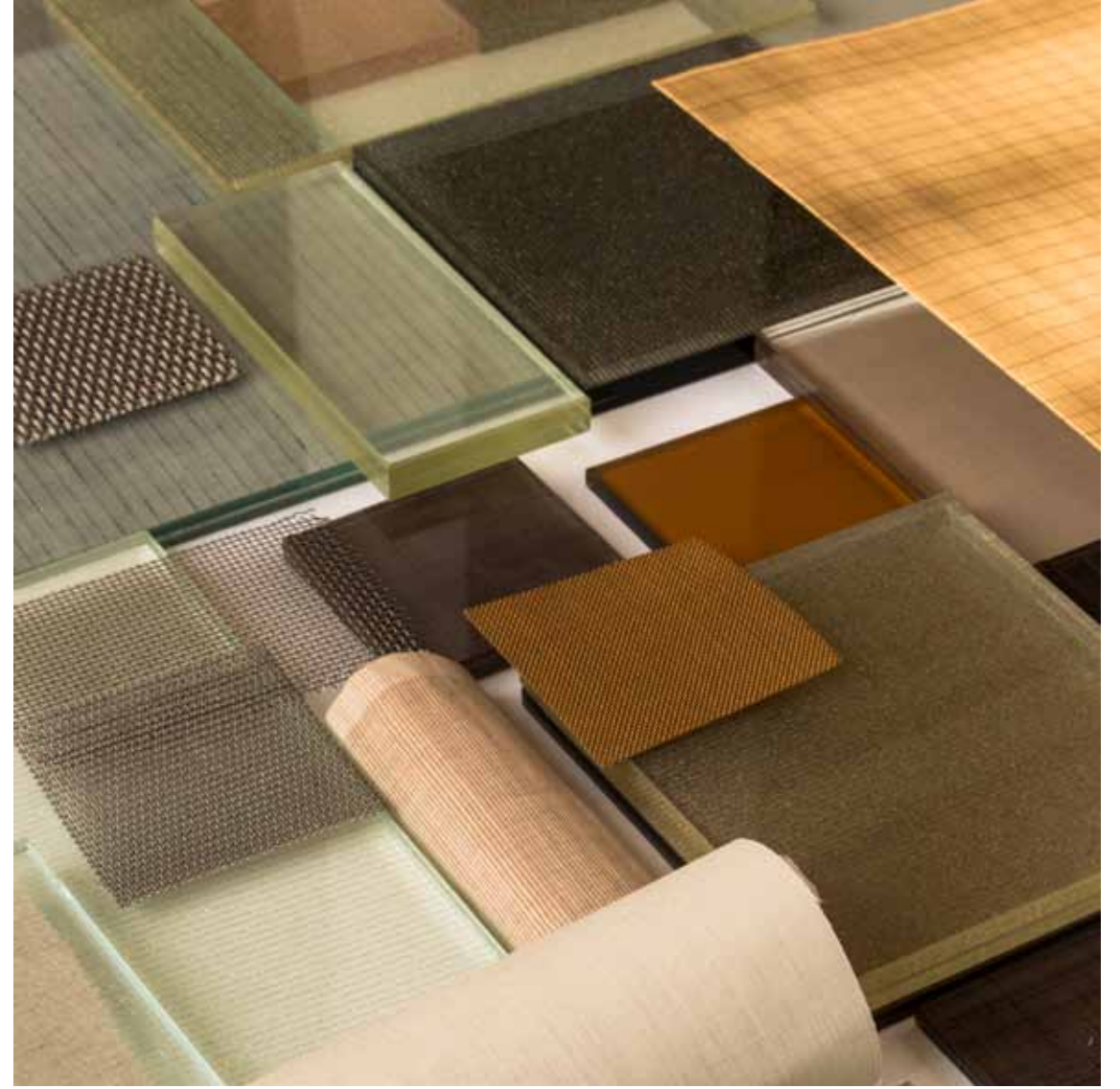


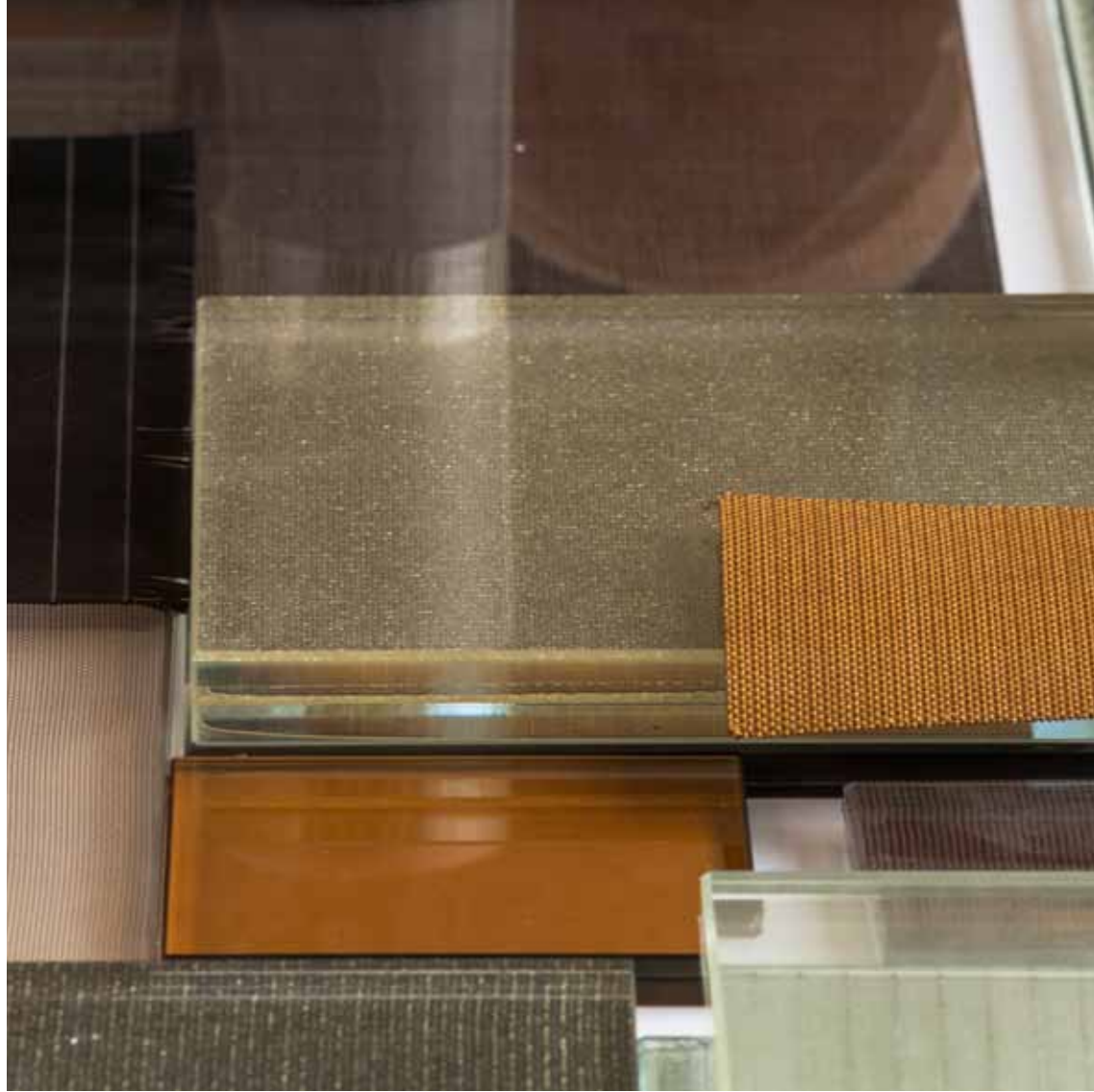




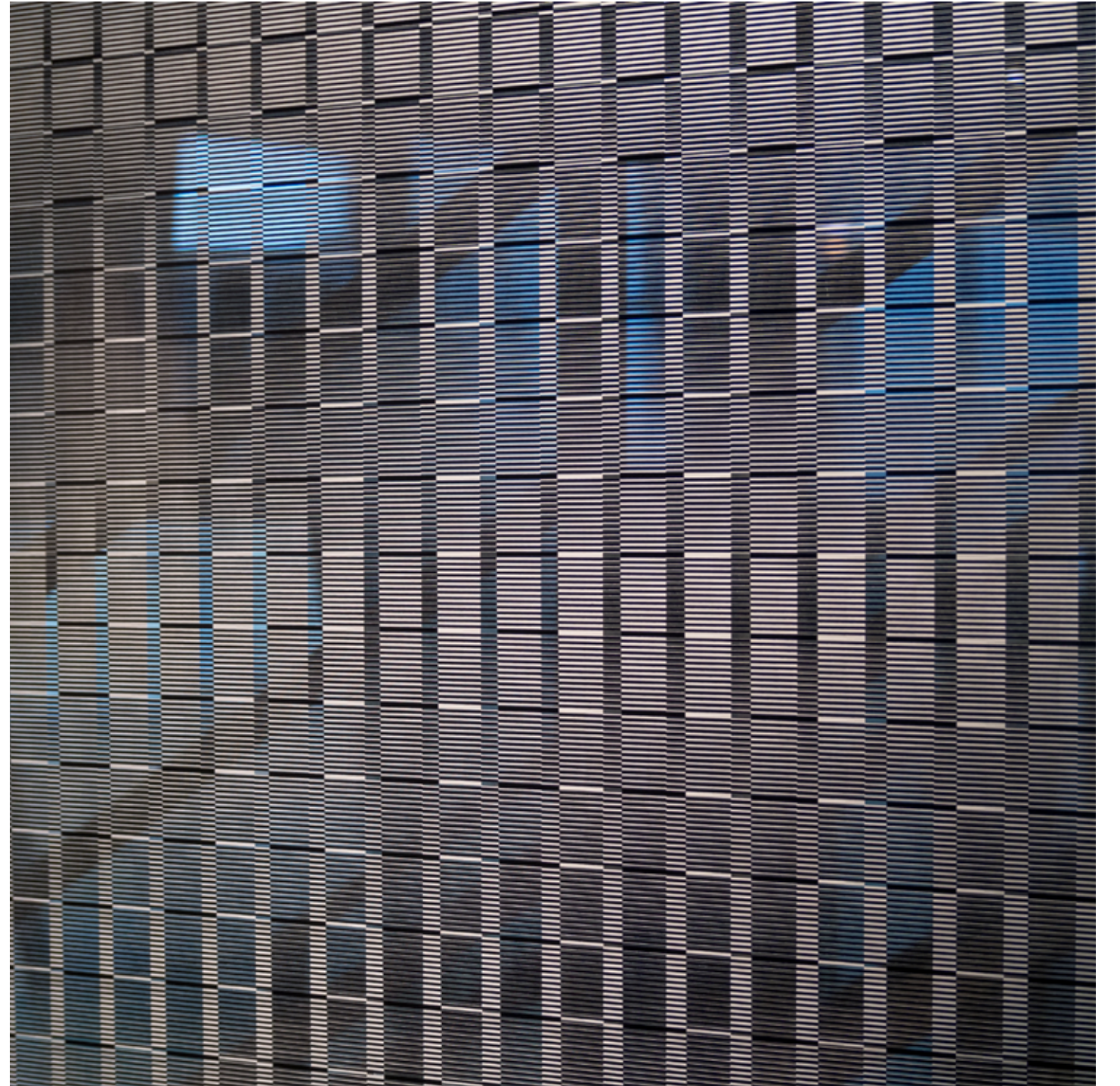
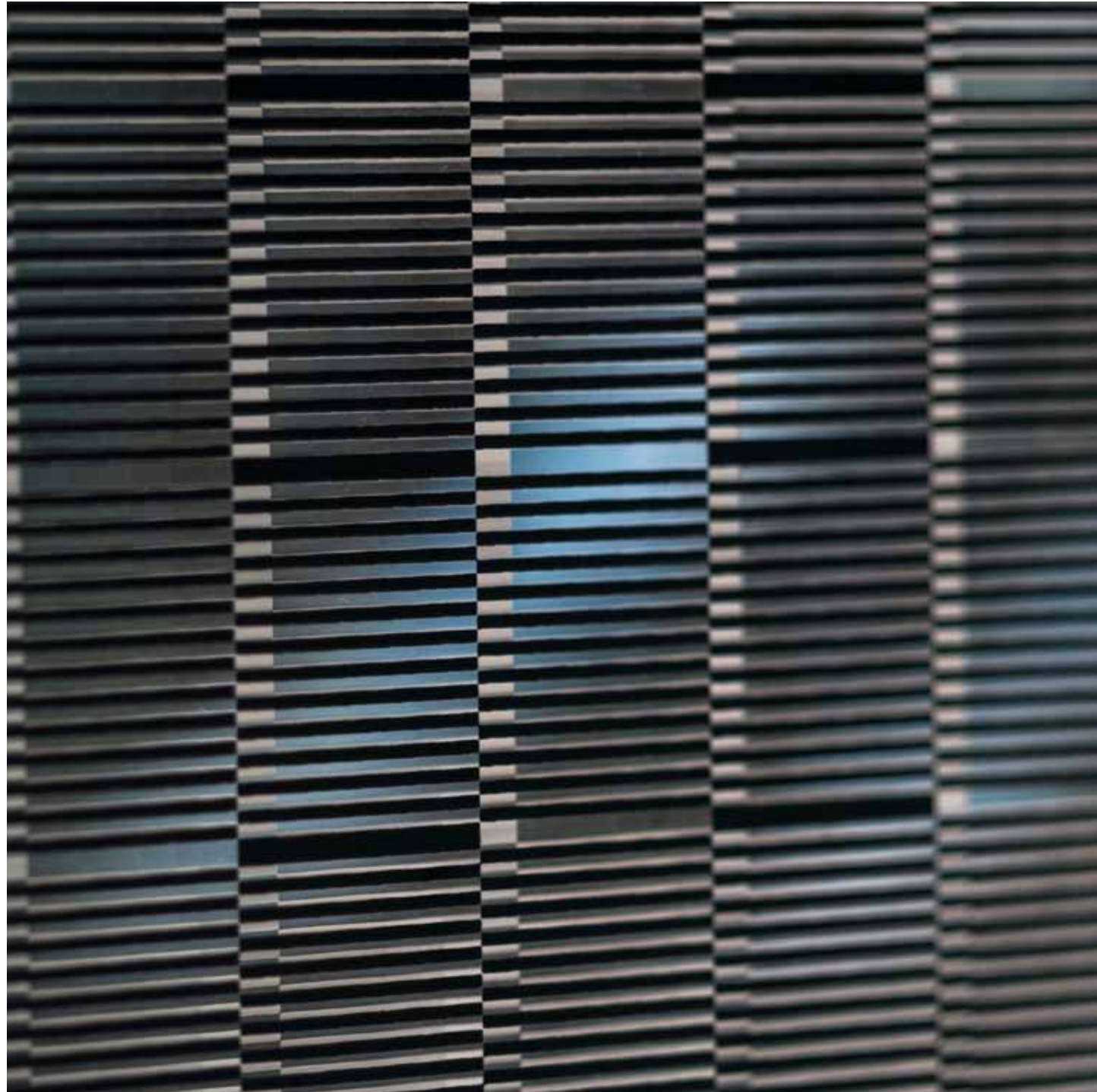










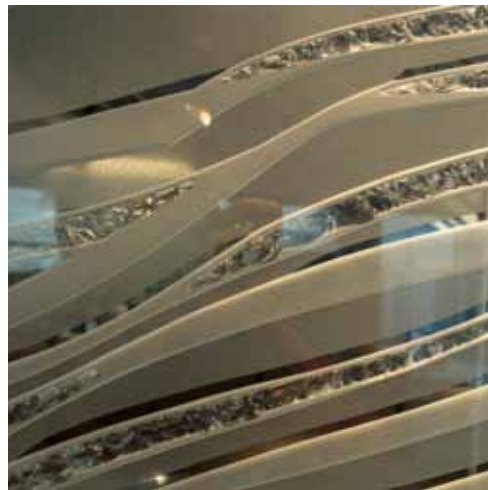








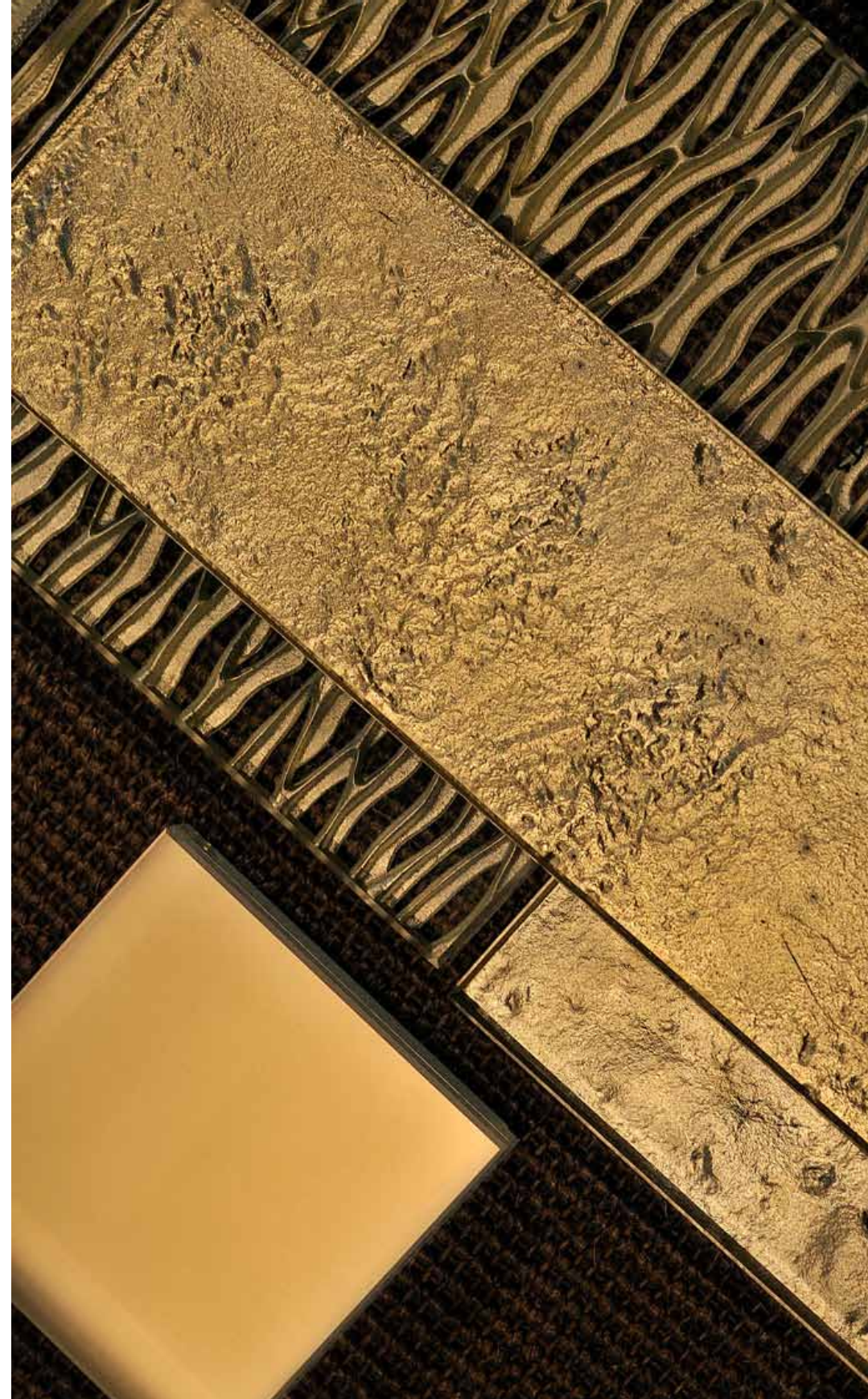


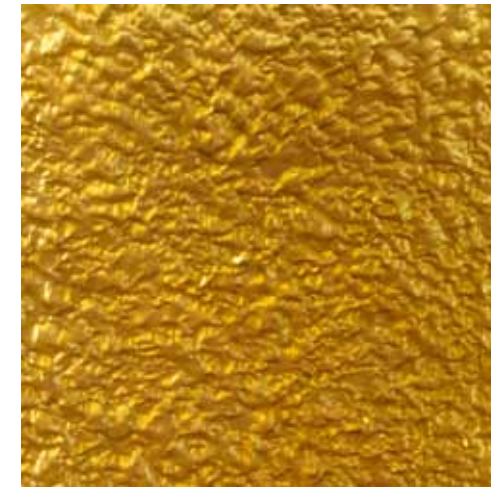


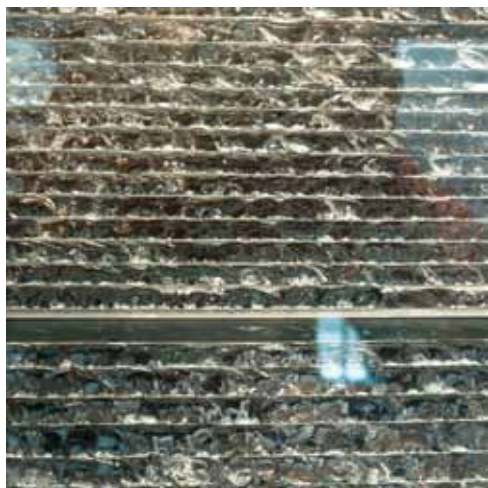
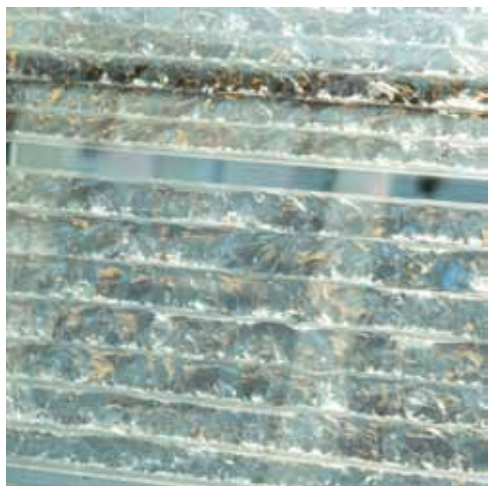
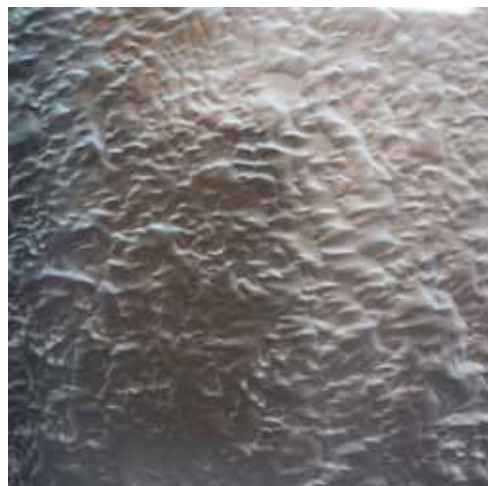






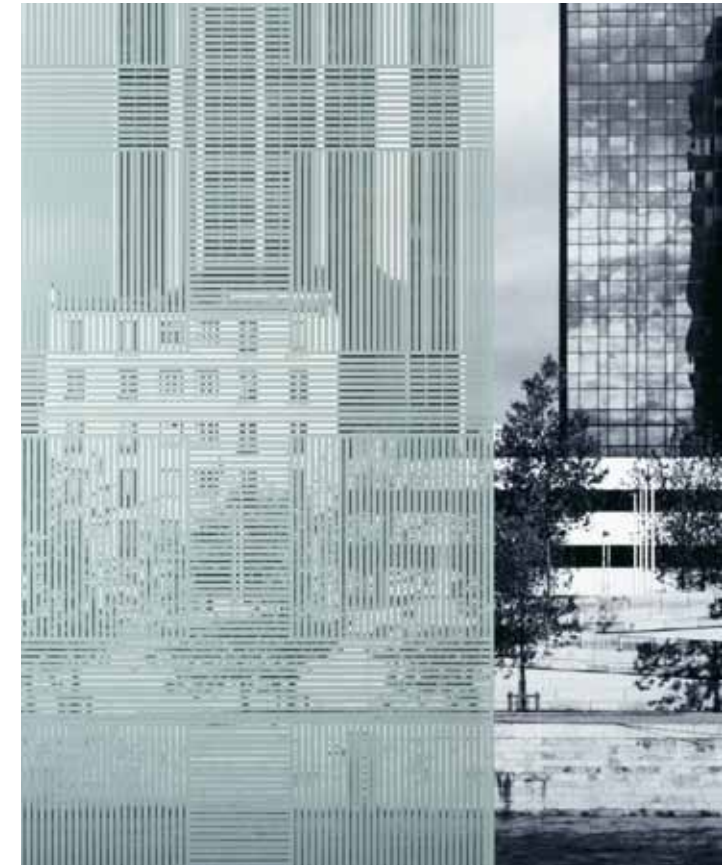


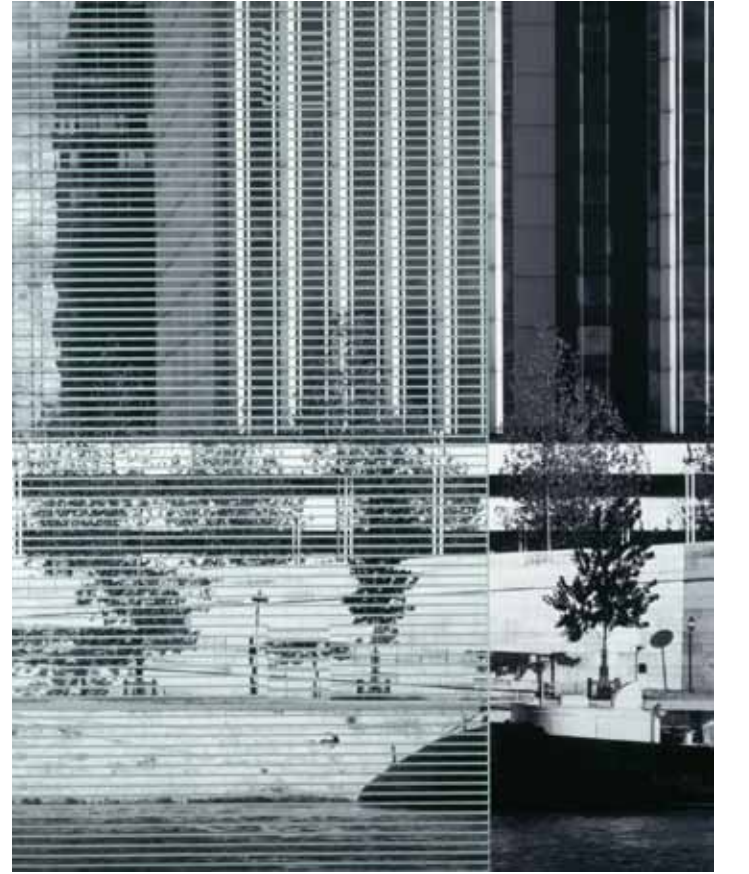


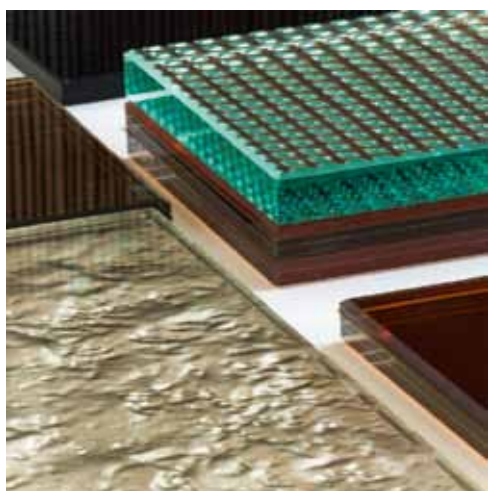
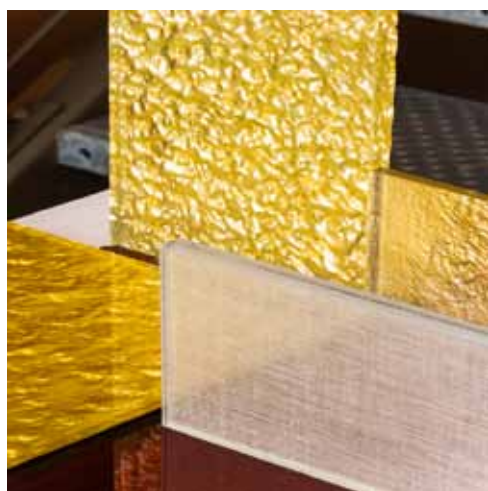
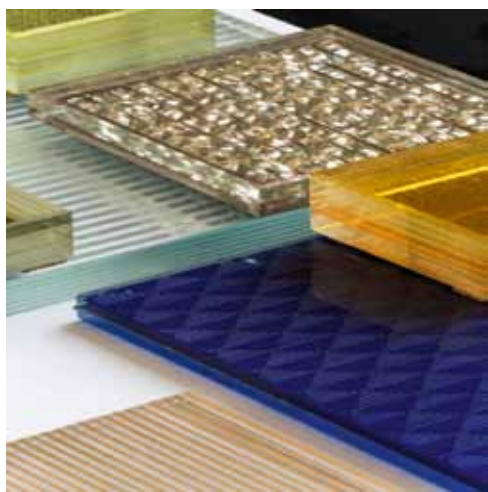




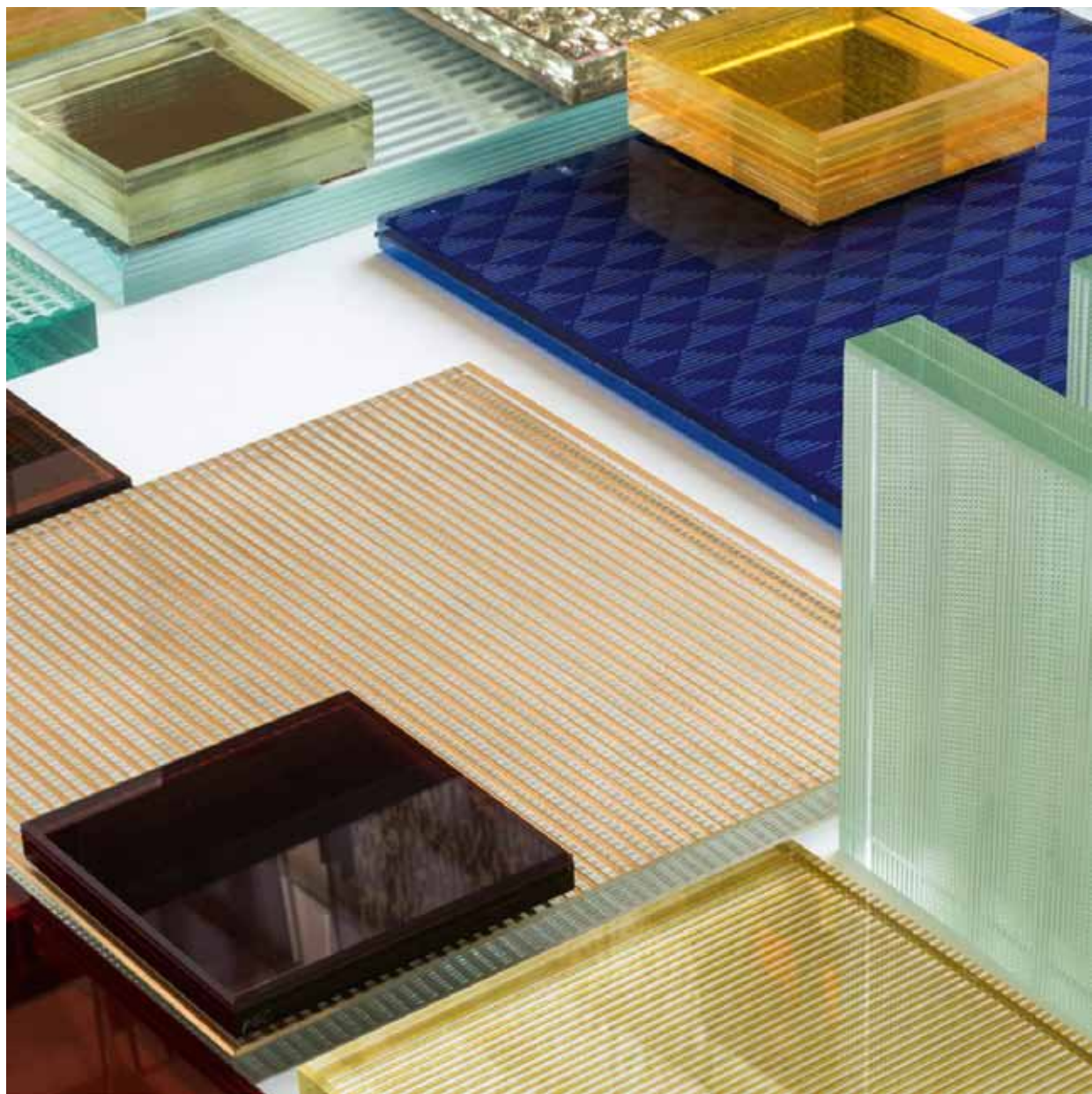




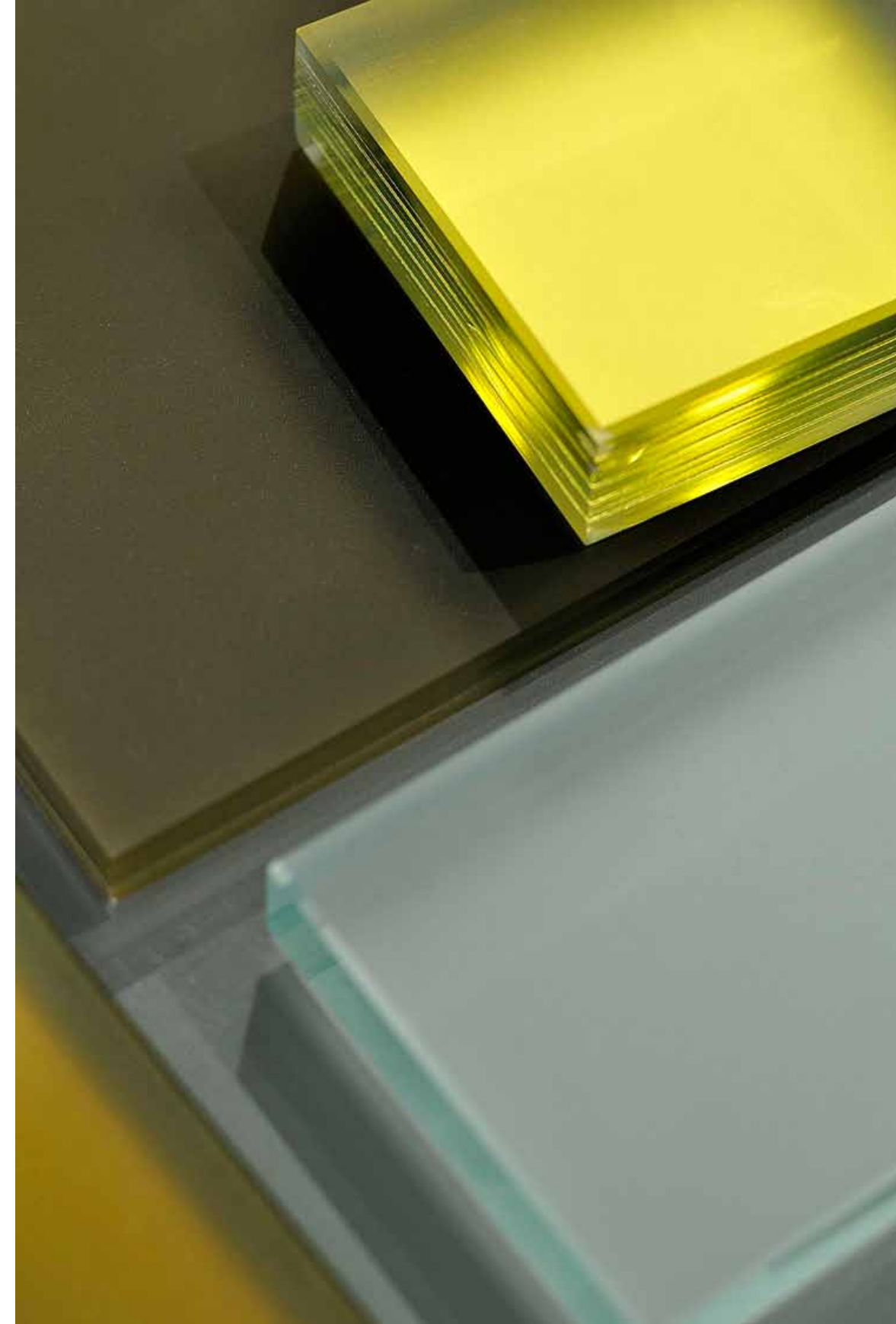
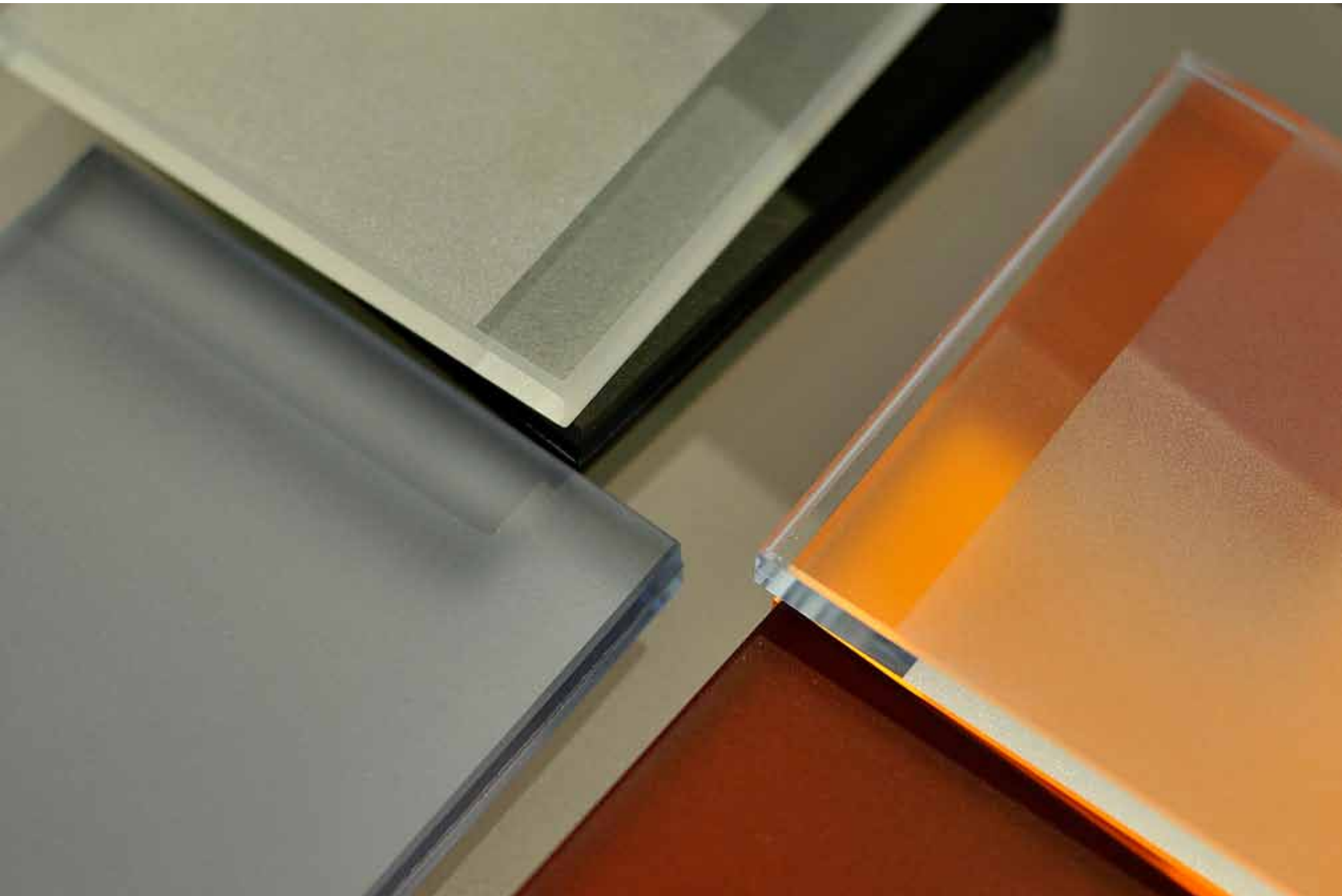




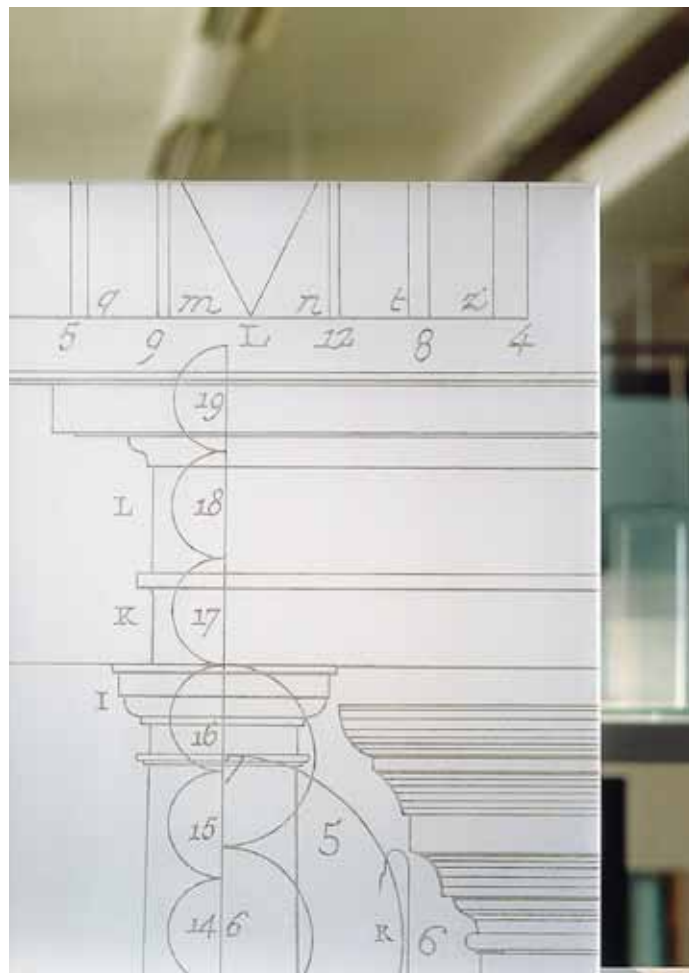




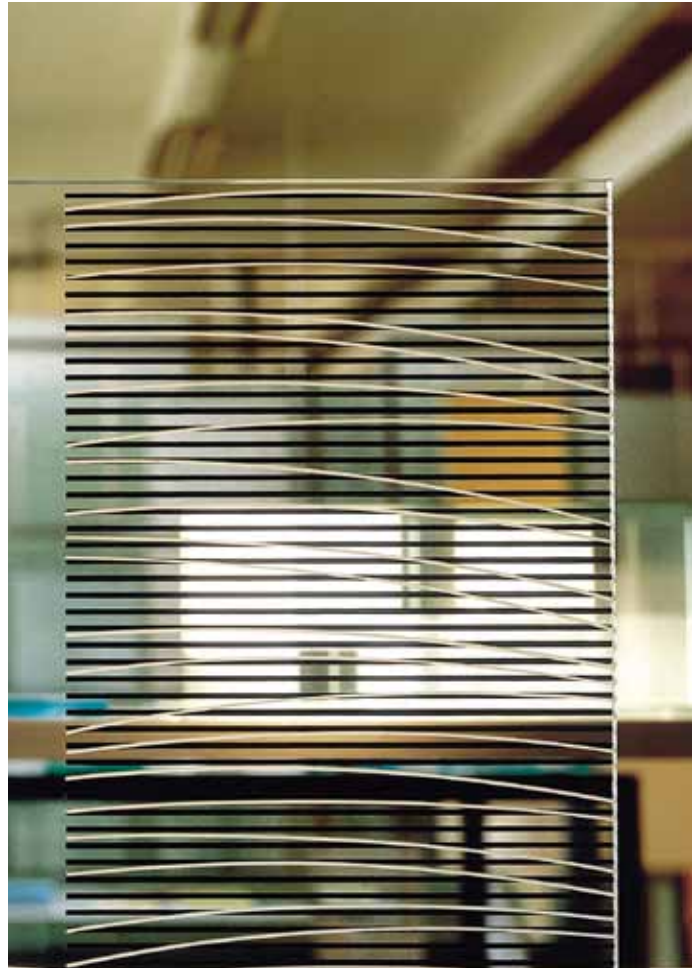








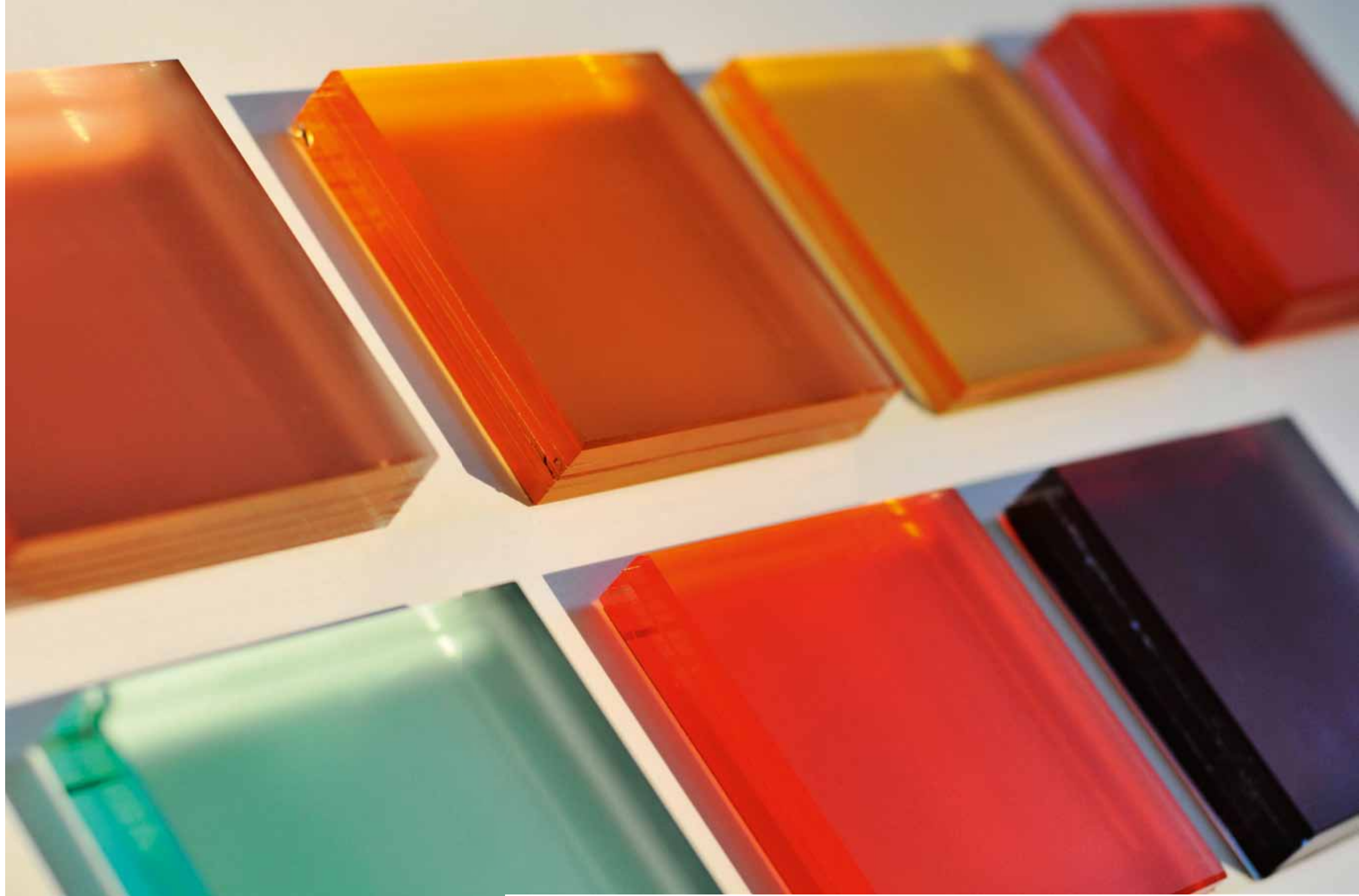






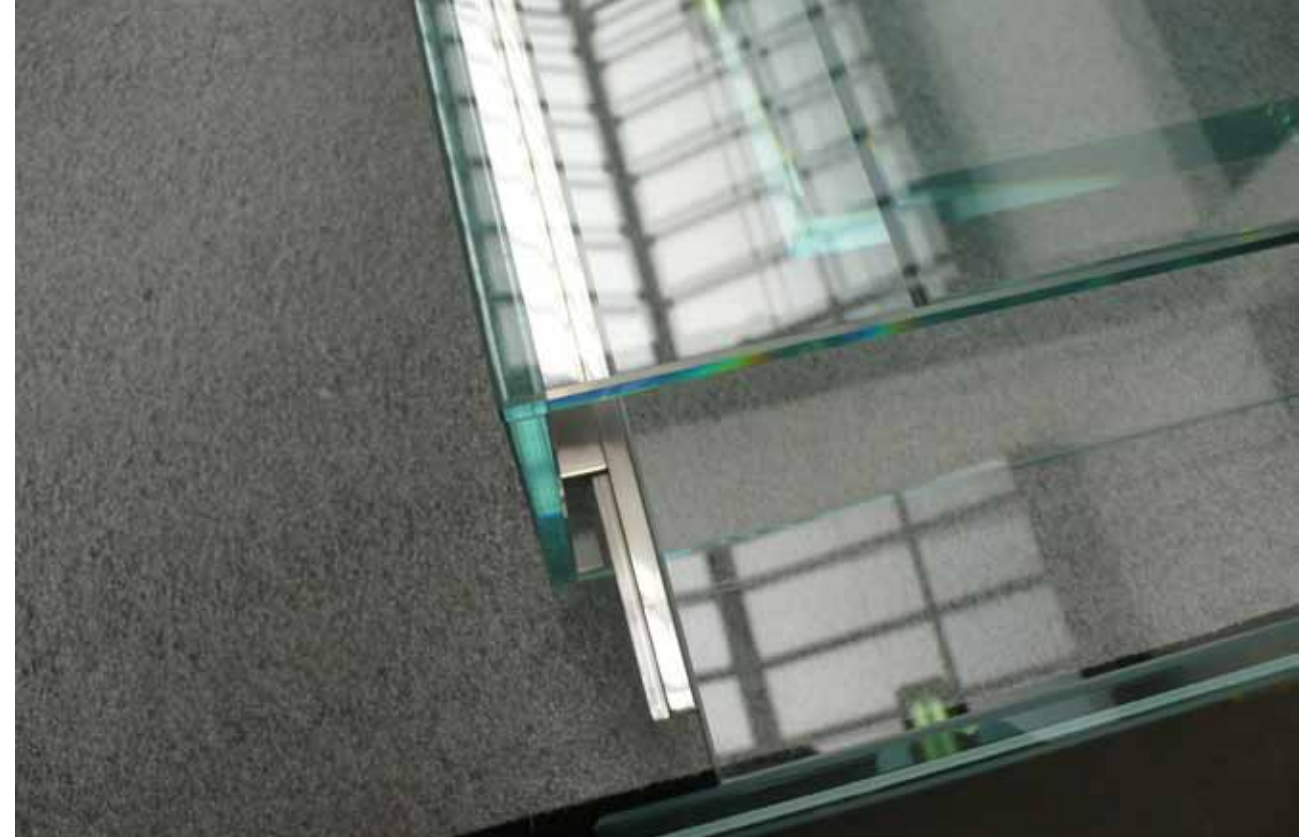


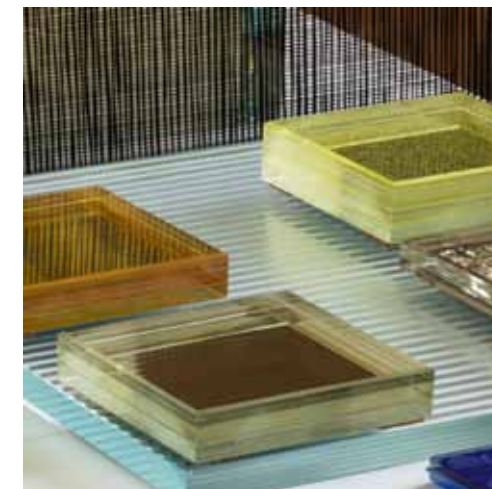
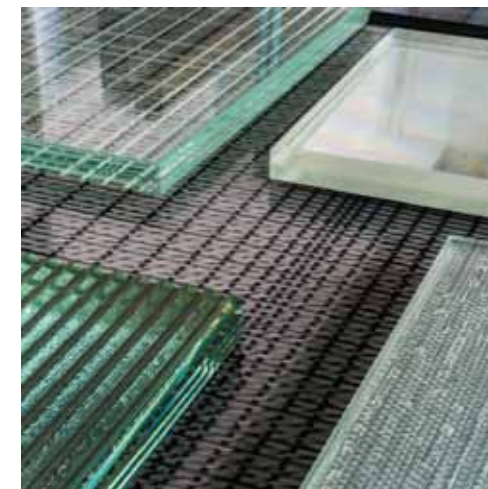
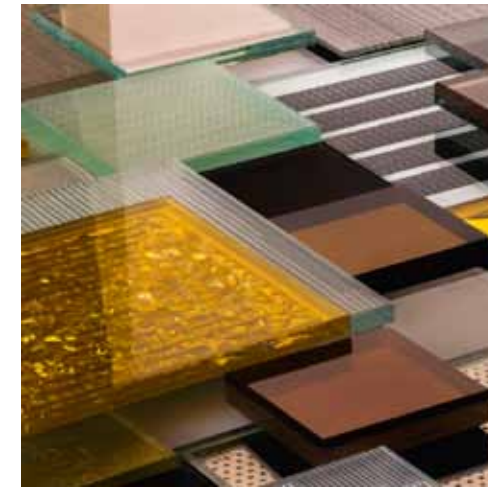


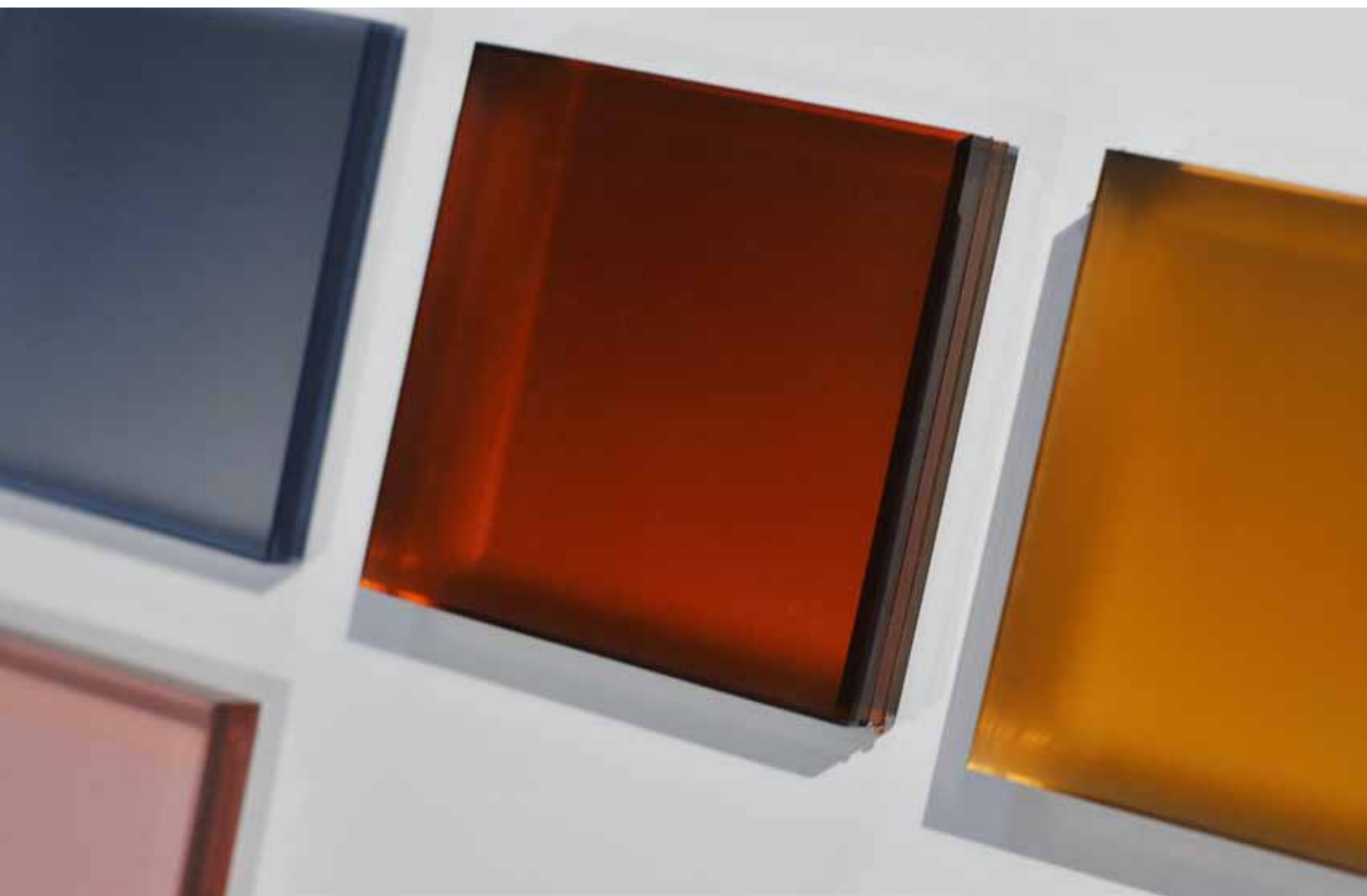


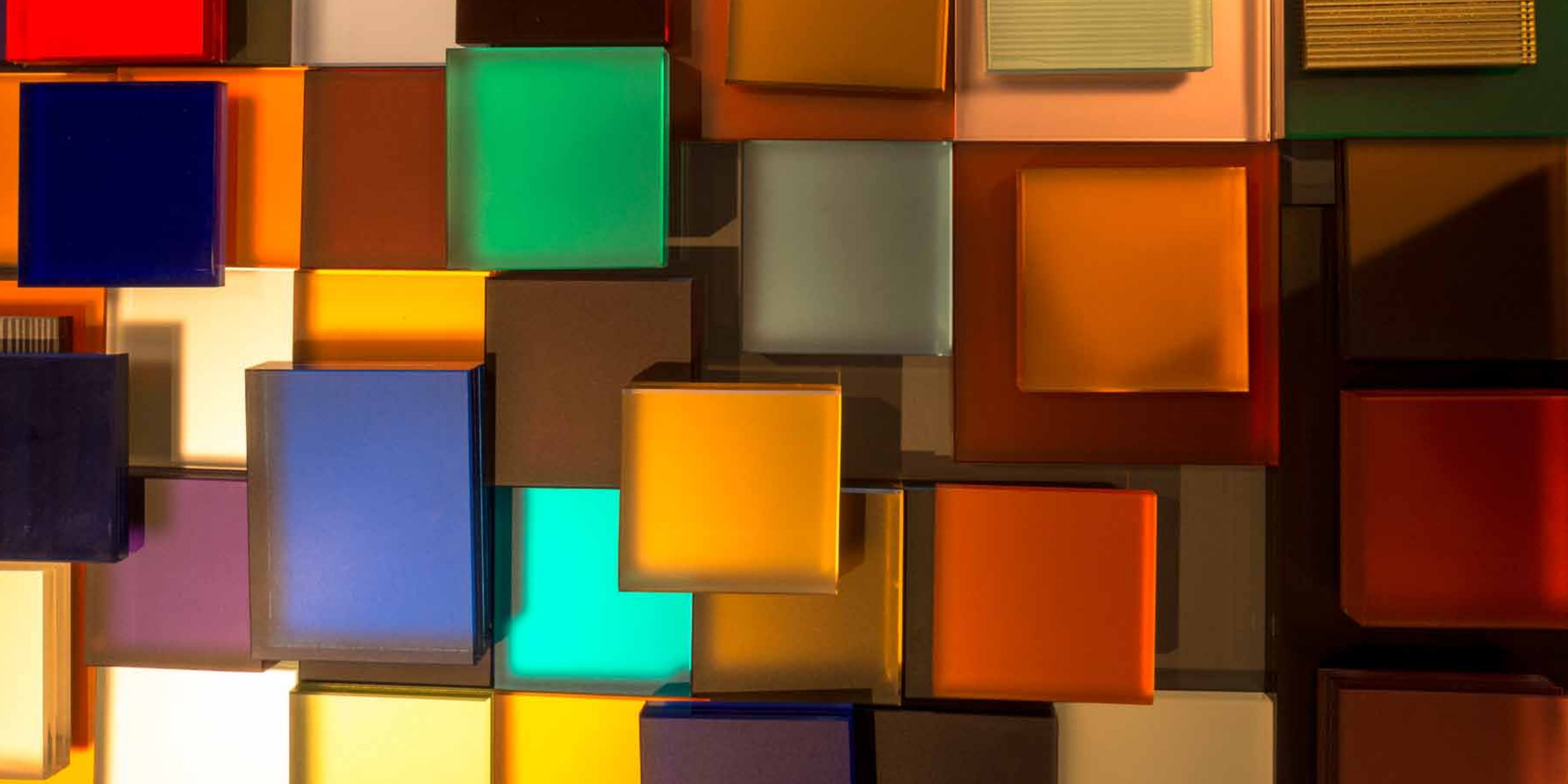




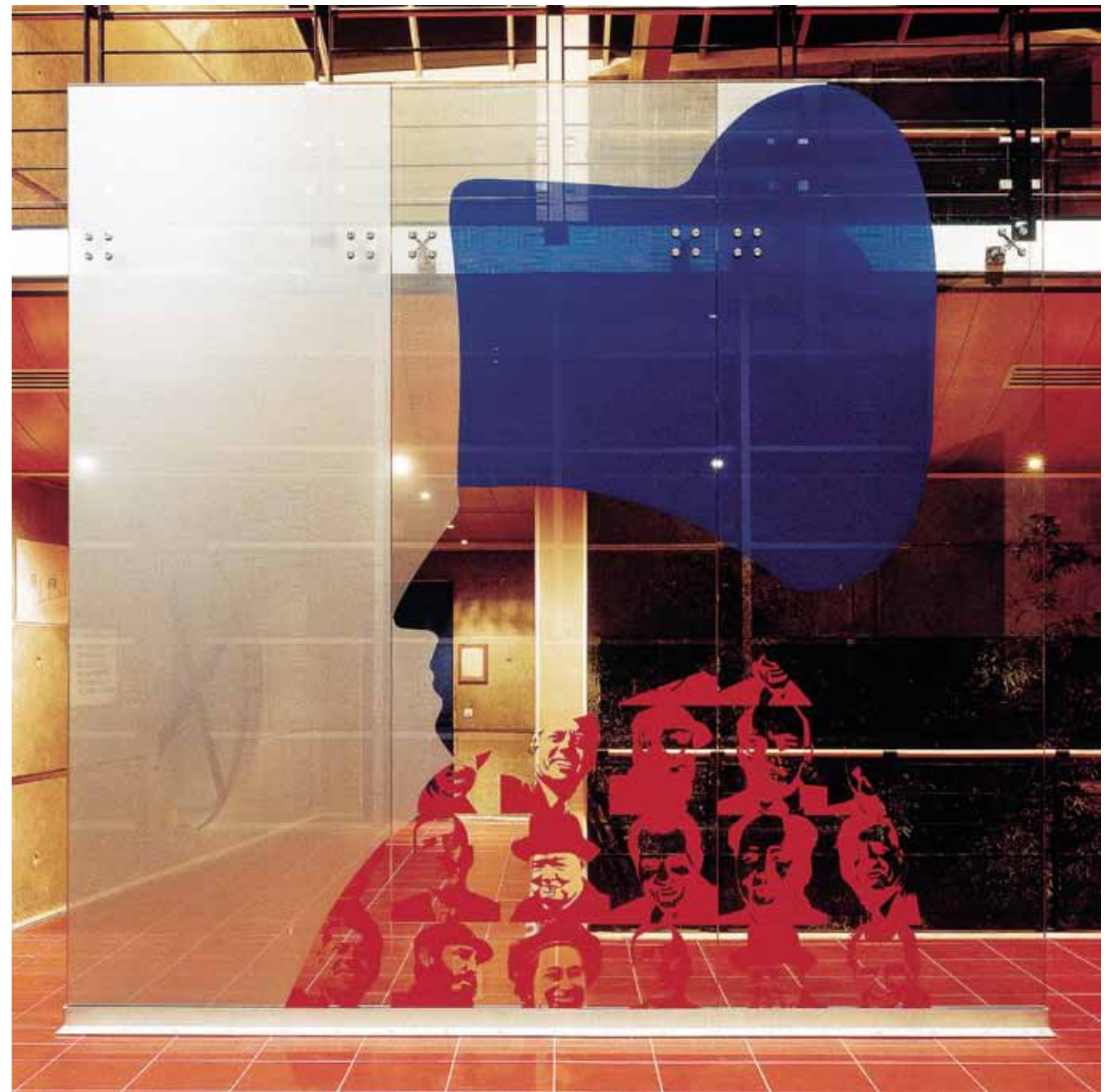


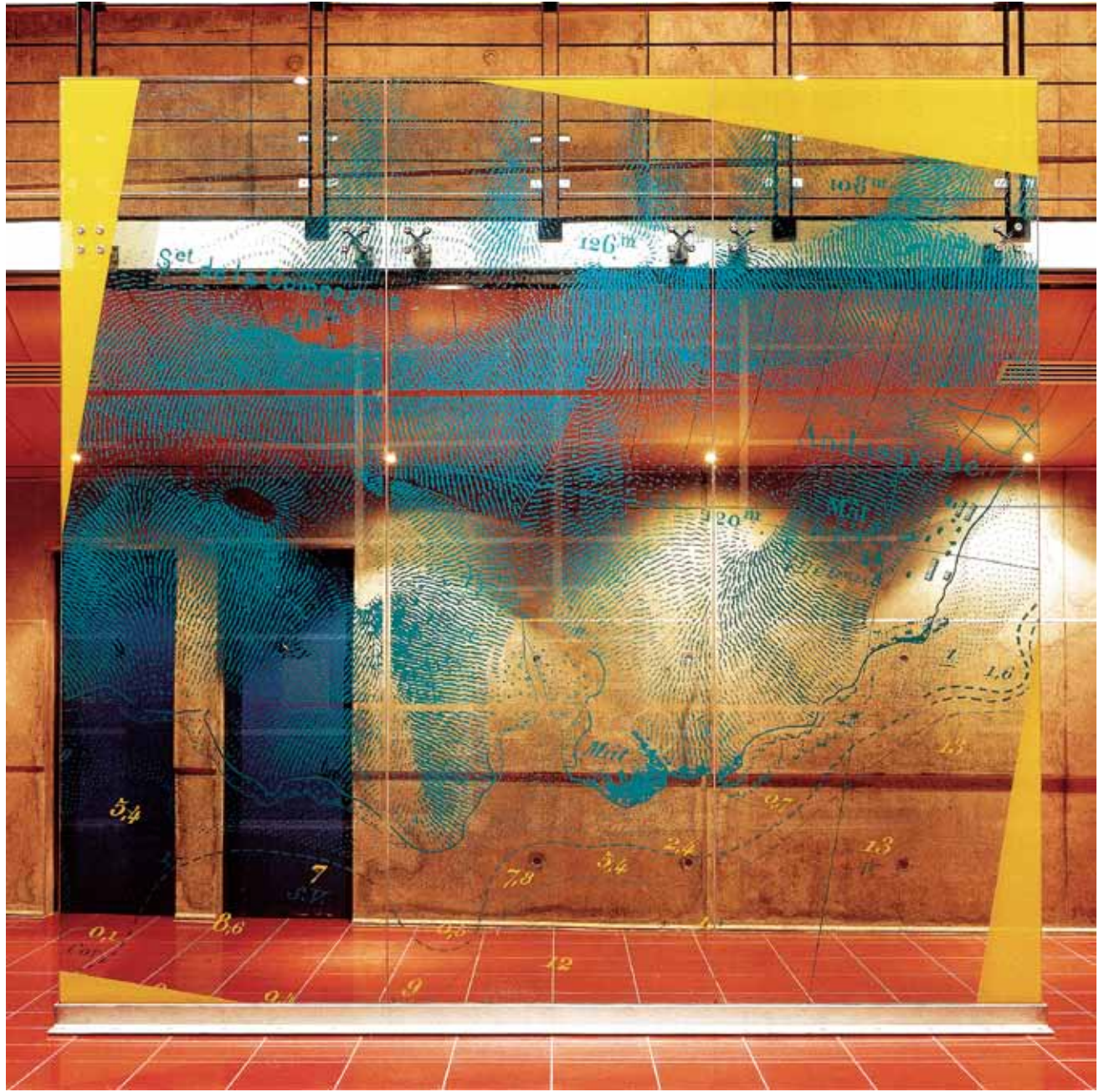




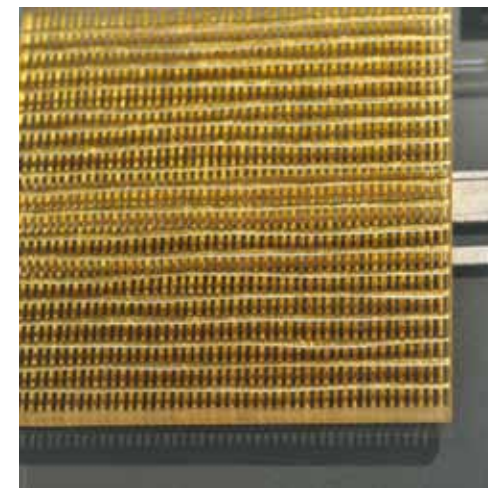
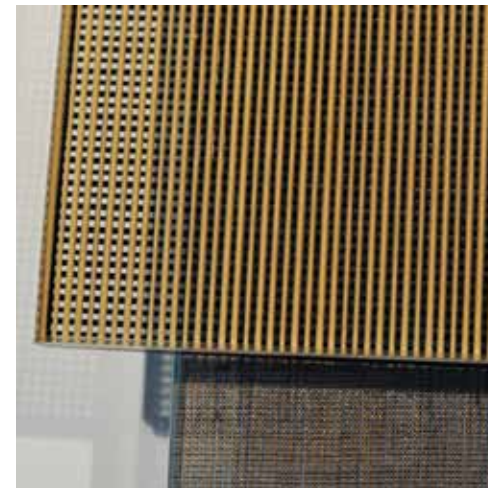
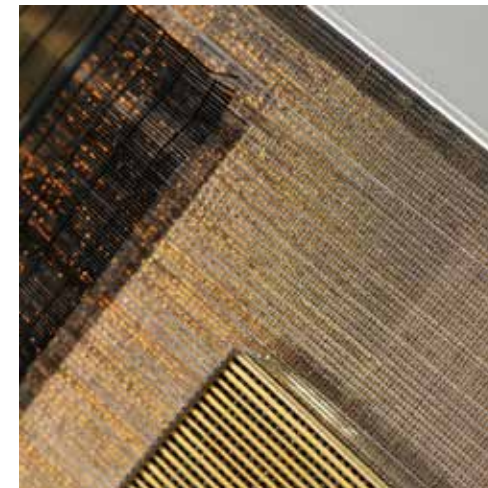
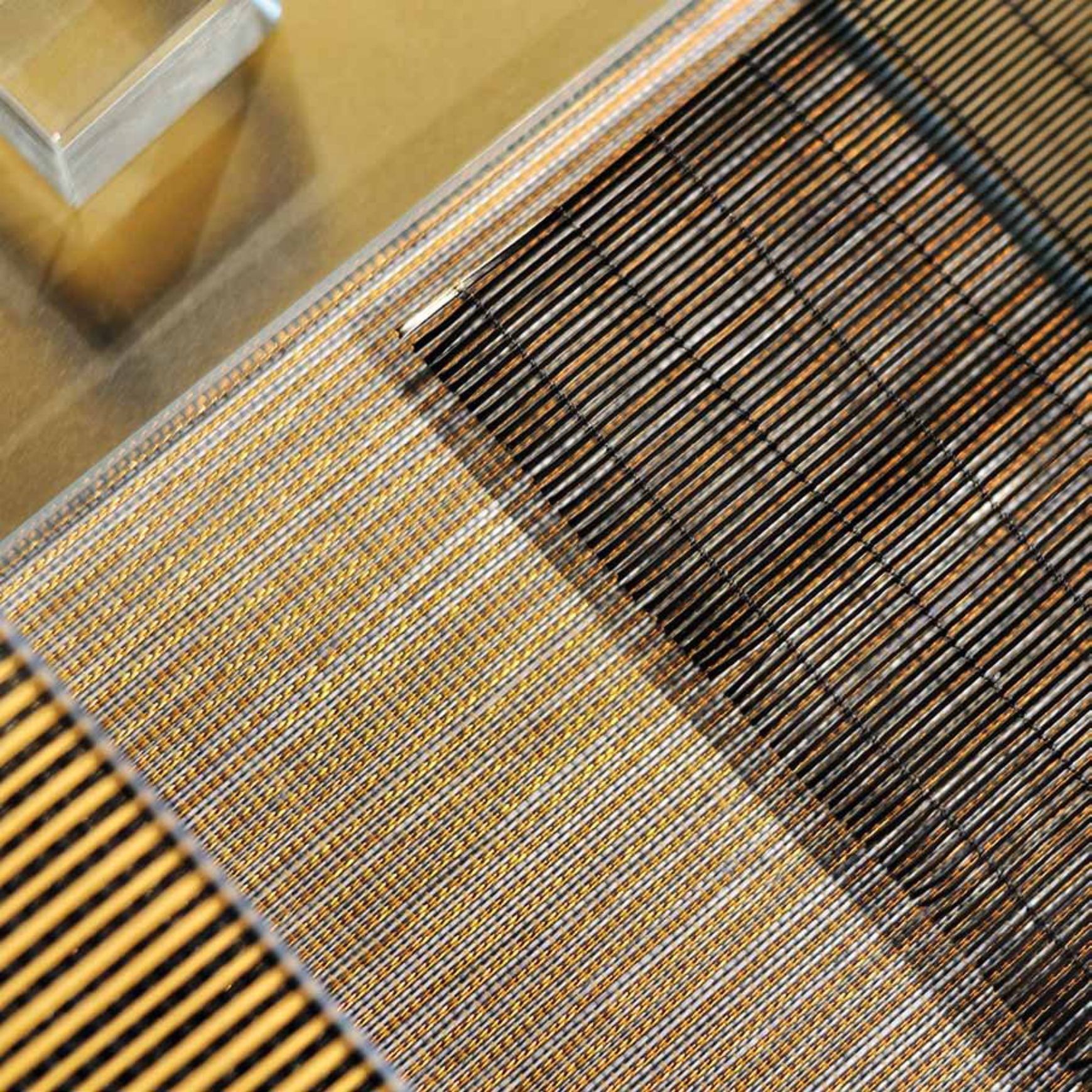


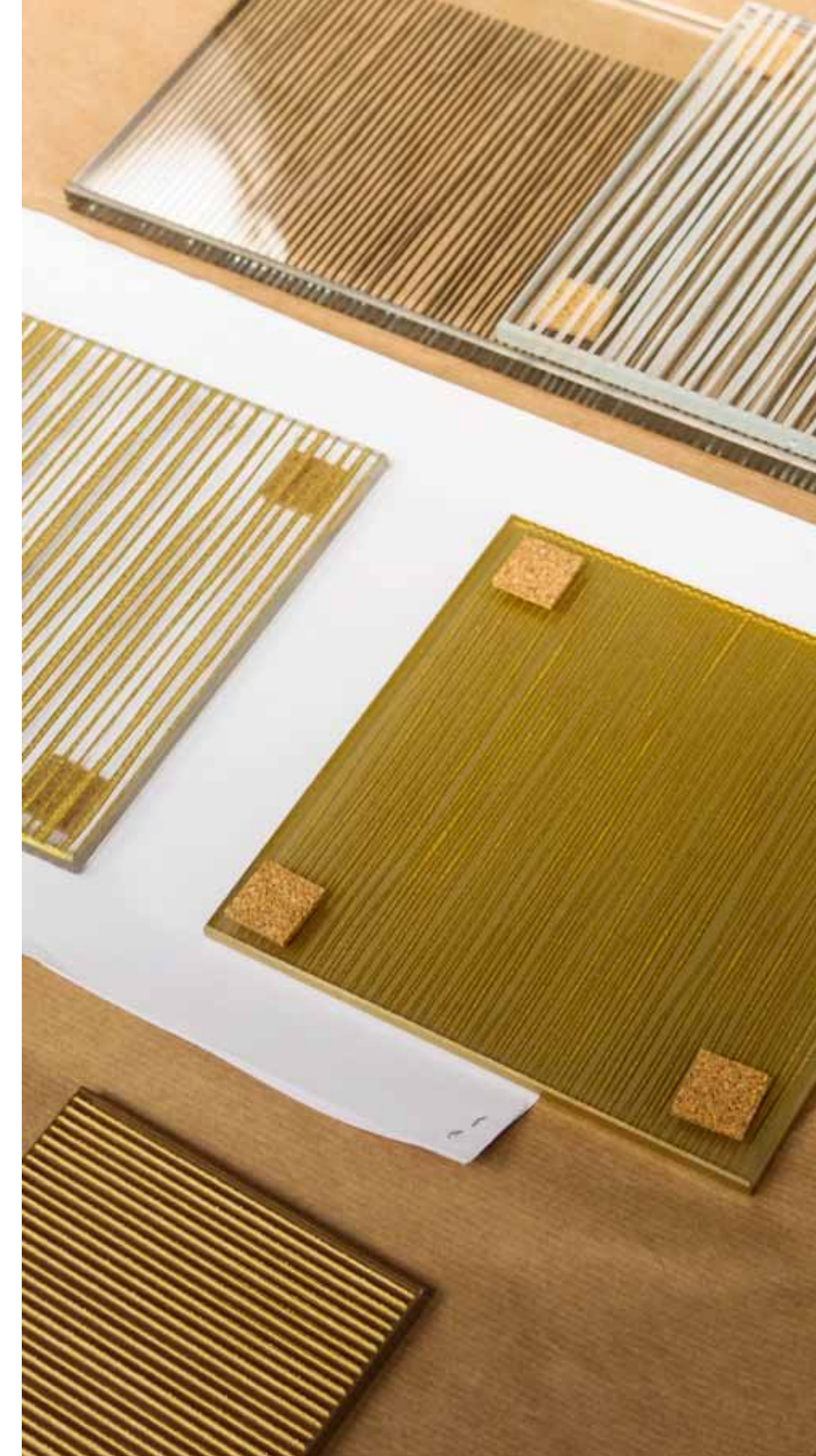
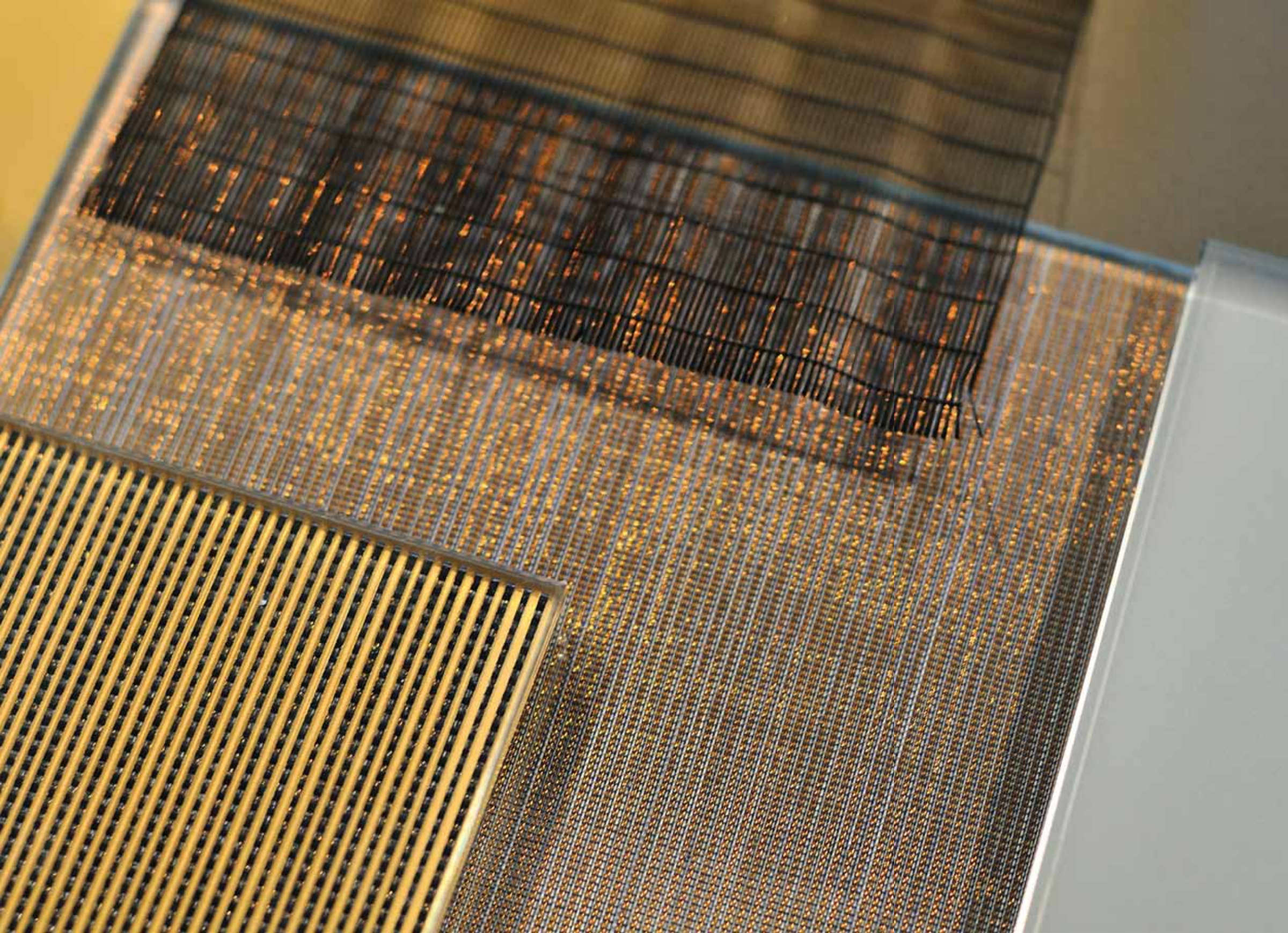






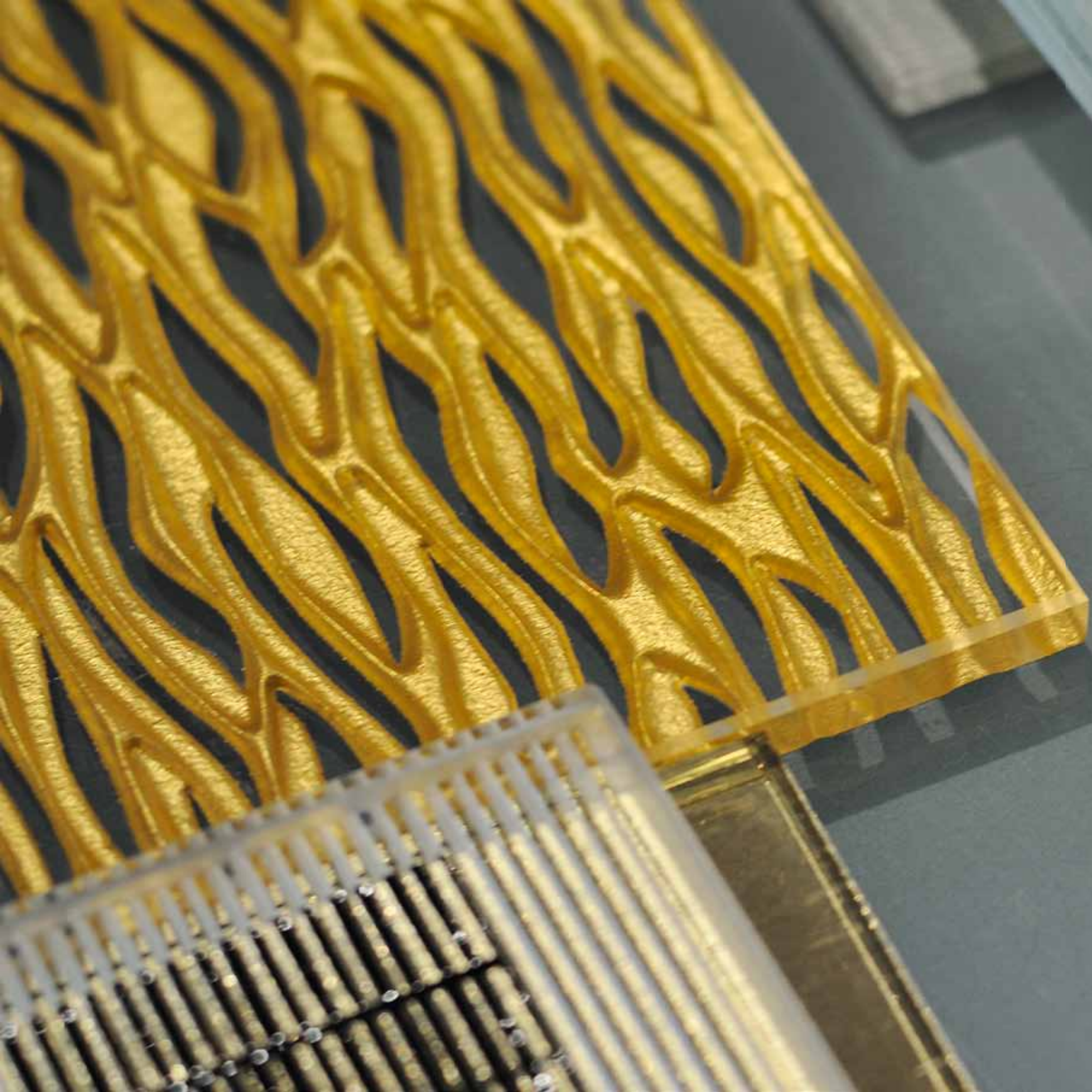




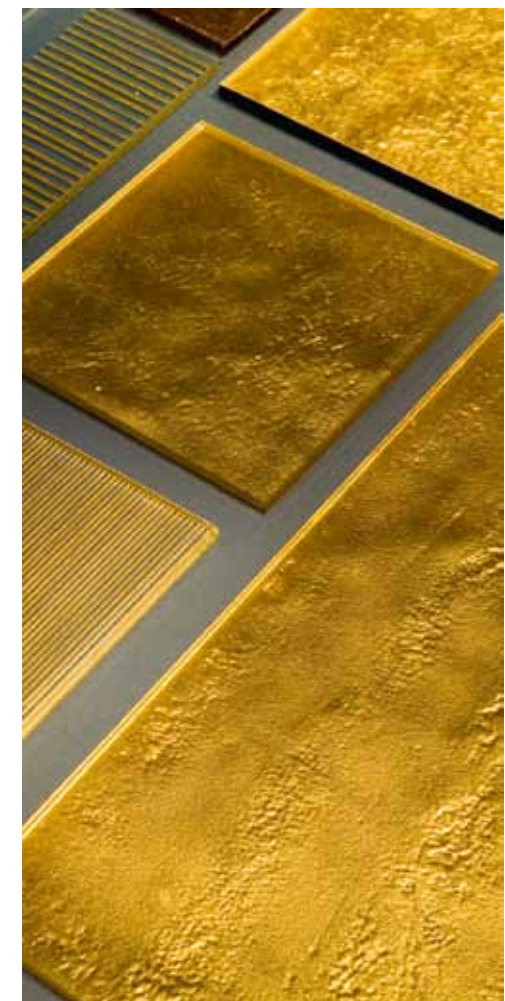
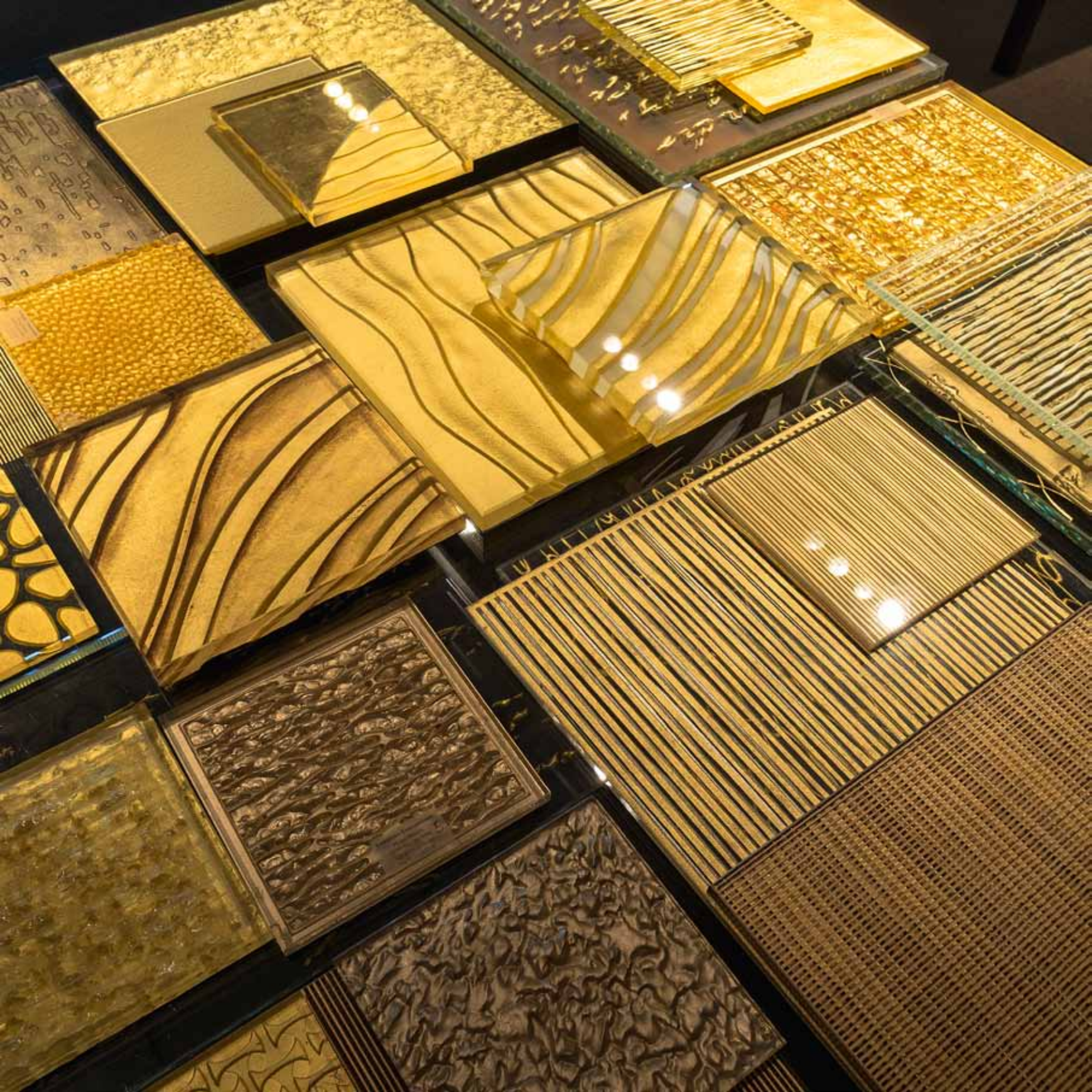


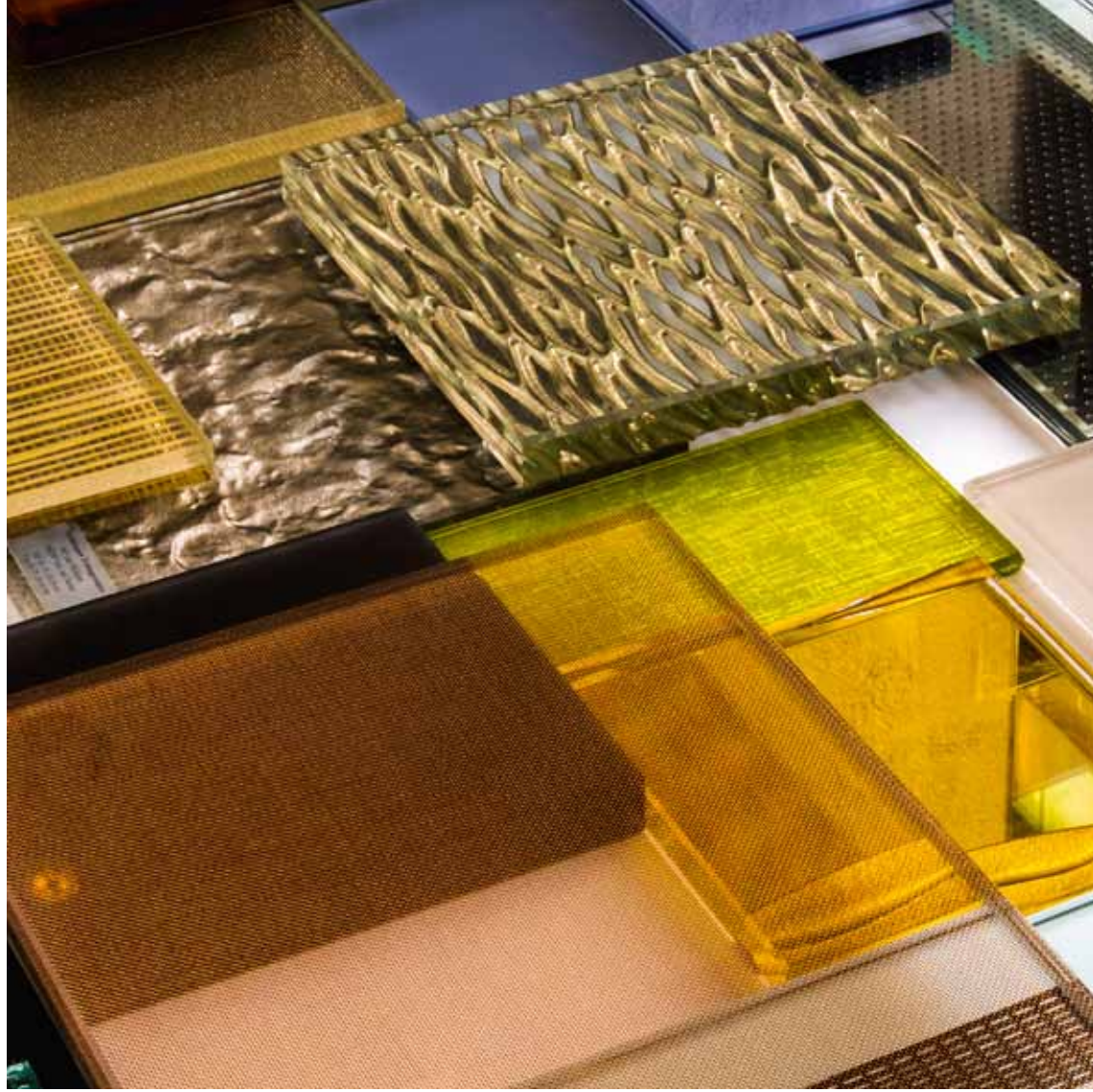


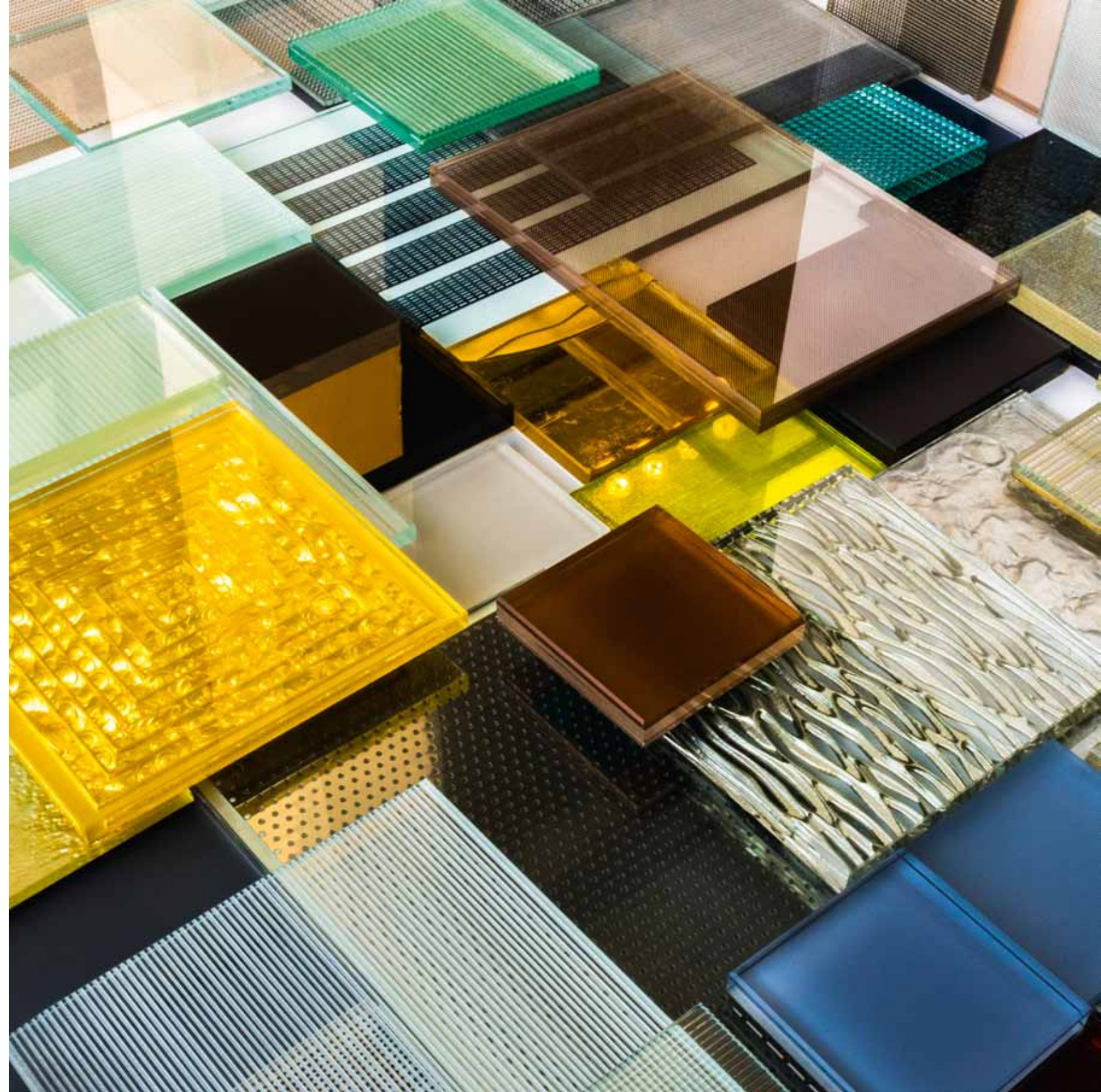


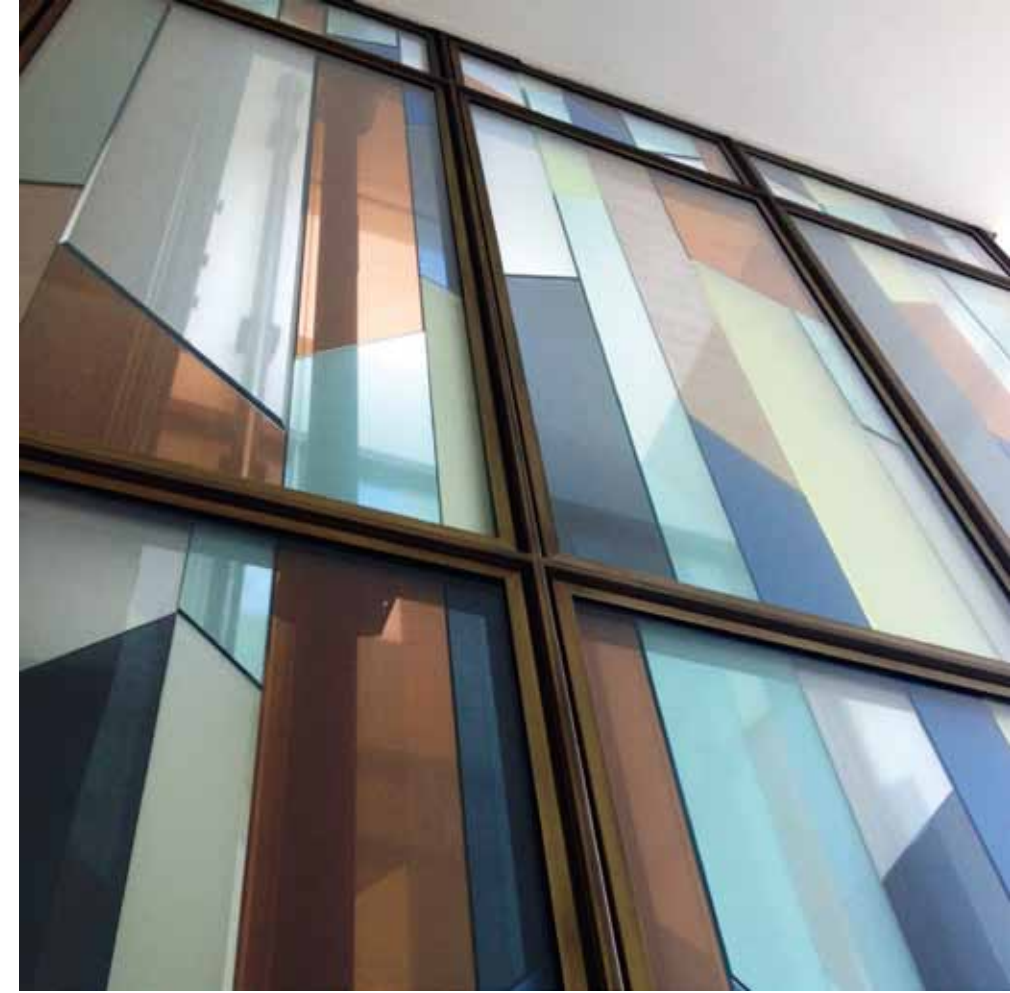
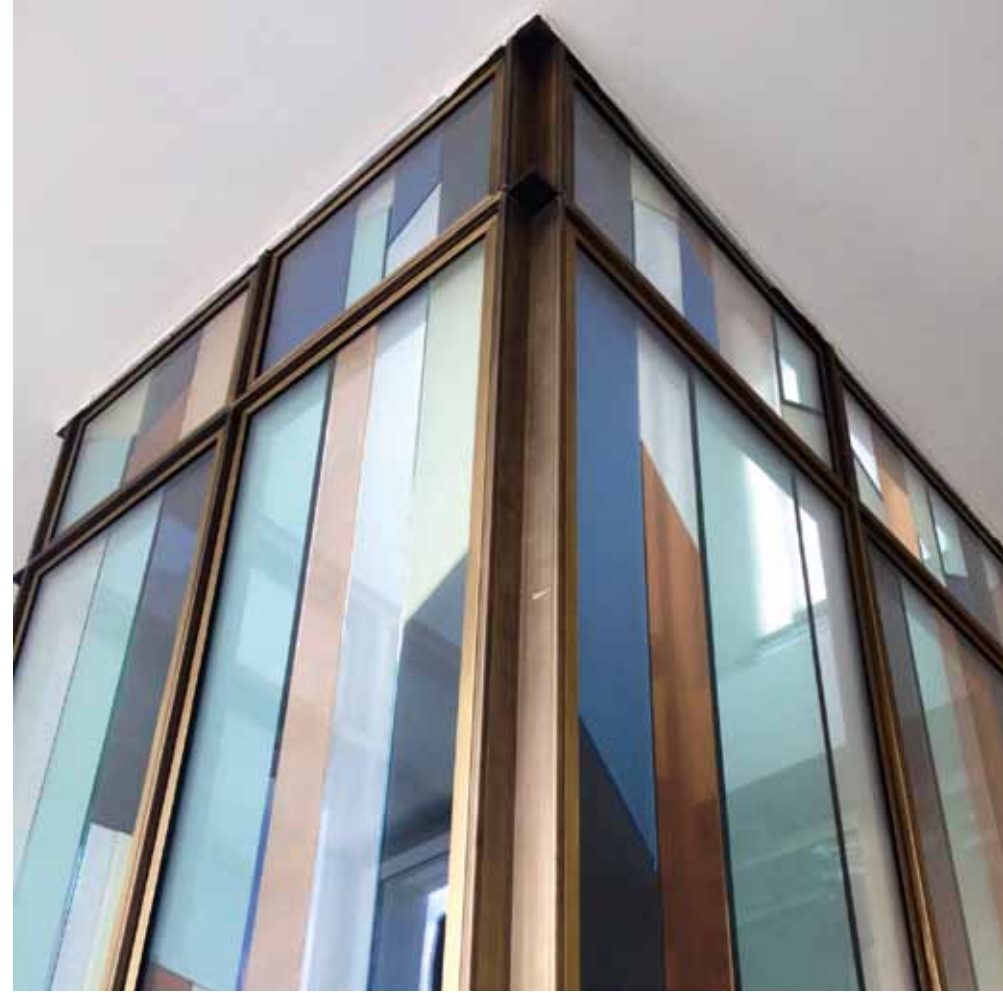
















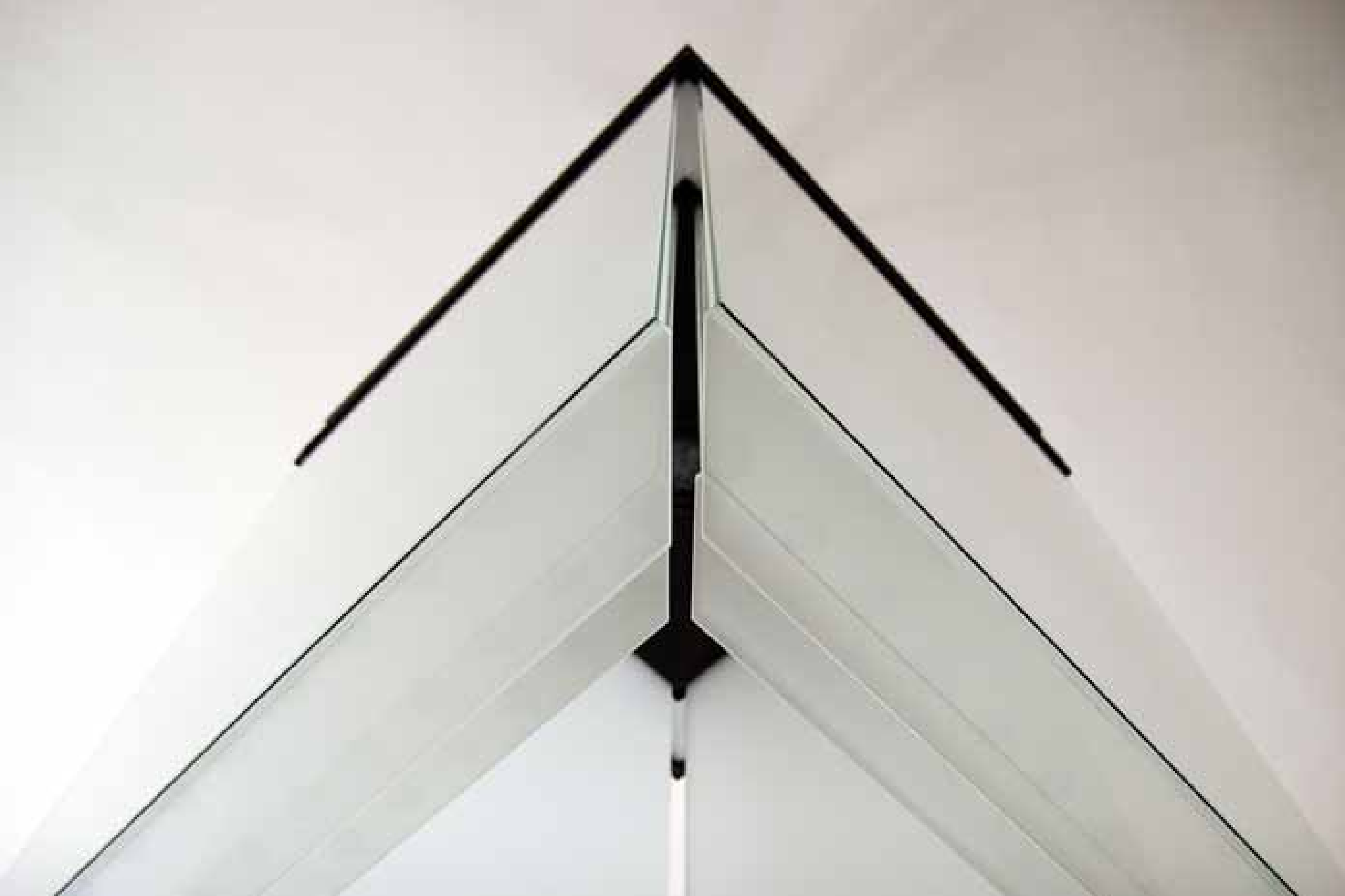






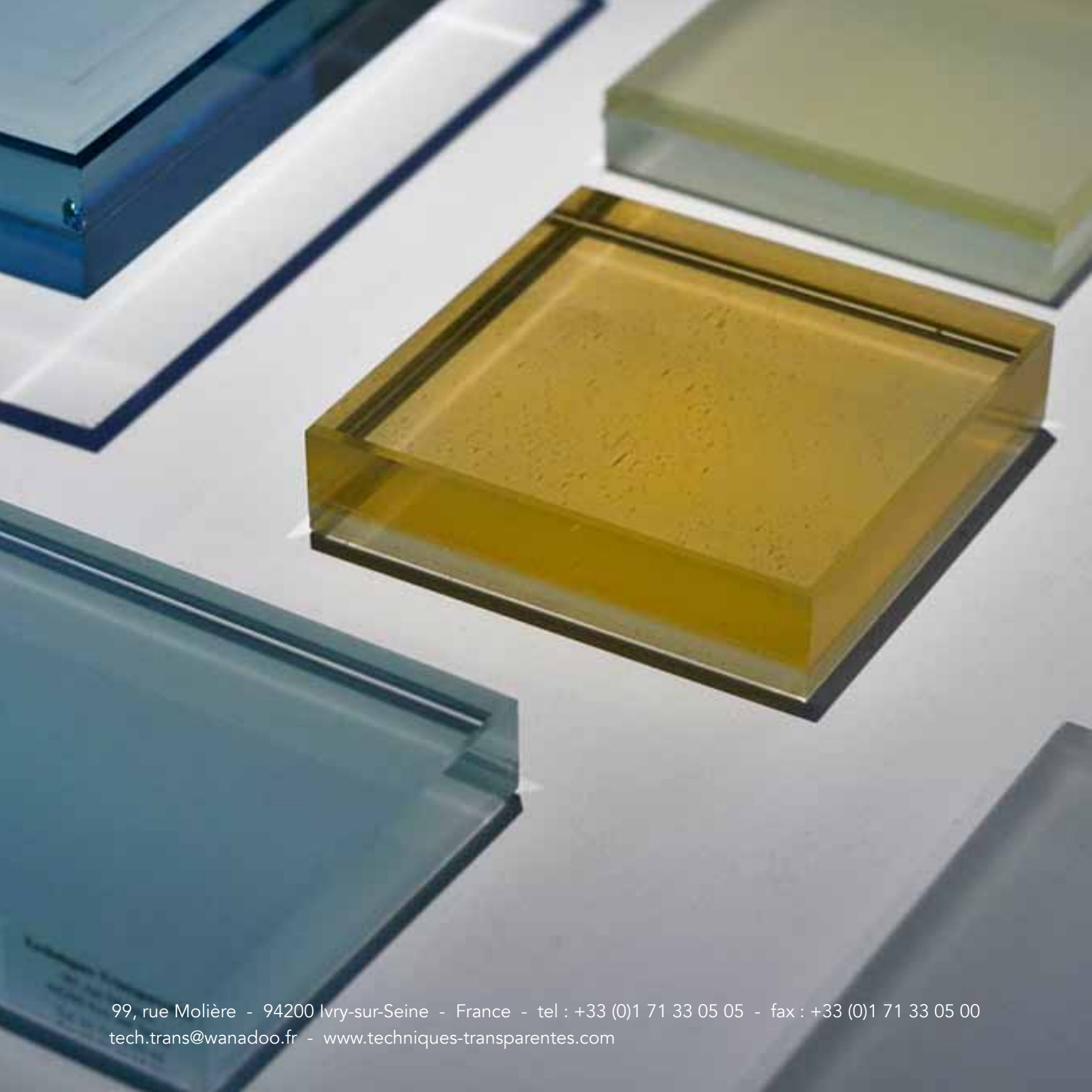






**CONSEIL ÉCONOMIQUE ET SOCIAL**, Paris | **FNAC ÉTOILE**, Paris | **HÔPITAL NECKER**, Paris | **JIL SANDERS**, Paris | **BANQUE MONDIALE**, London | **BIRD**, Paris | **OTIS**, La Défense | **TF1**, Paris | **FOUQUET'S BASTILLE**, Paris | **GAN**, Paris | **COMÉDIE FRANÇAISE**, Paris | **MUSÉE DE LA POSTE**, Paris | **GRAND OPTICAL**, Paris | **BOUTIQUE HUGO BOSS**, Paris | **FRANÇAISE DES JEUX**, Vitrolles | **RANK XEROX**, Paris | **MADÉLIOS**, Paris | **MINISTÈRE DES AFFAIRES ÉTRANGÈRES**, Paris | **PARC DES EXPOSITIONS**, Paris Nord | **CENTRE CULTUREL FRANÇAIS**, Berlin | **RESTAURANT PIERRE GAGNAIRE**, Saint-Etienne | **TRÉSORERIE GÉNÉRALE**, Bourg-en-Bresse | **HOMMAGE À NADAR**, Paris | **JEAN-CLAUDE DECAUX**, Plaisir | **PÉCHINEY, PAVILLON FRANÇAIS**, Seville | **LE FIGARO**, Paris | **CAISSE DES DÉPÔTS ET DES CONSIGNATIONS**, Grande Arche de la Défense | **MUSÉE BOURDELLE**, Paris | **HÔTEL HYATT REGENCY**, Roissy | **CENTRE DE CONFÉRENCE INTERNATIONALES**, Paris | **BOUTIQUE THIERRY MUGLER**, Paris | **CITÉ DES SCIENCES DE L'INDUSTRIE, LA VILETTE**, Paris | **TECHNO**, Paris | **HERMAN MILLER**, Paris | **AIR FRANCE**, Roissy | **CENTRE DES ARCHIVES ÉCONOMIQUES ET FINANCIÈRES**, Savigny-le-Temple | **SCHLUMBERGER, RIBOUD, PRODUCT CENTER**, Clamart | **HÔTEL SHERATON**, Roissy | **CAPITOL HOTEL**, London | **COMPAGNIE LUXEMBOURGOISE DE TÉLÉVISION**, Luxembourg | **UNESCO**, Paris | **ASSEMBLÉE NATIONALE**, Paris | **ANDERSEN CONSULTING**, Paris | **GALERIE ROYALE**, Paris | **HAVAS**, Paris | **FONDATION CARTIER**, Paris | **S.N.C.F.**, Paris | **COLLÈGE ALAIN FOURNIER**, Clamart | **LA SAINTE-CHAPELLE**, Paris | **CHRONOPOST**, Paris | **MUSÉE D'HISTOIRE NATURELLE**, Paris | **SAINT-GOBAIN**, La Défense | **TOTAL**, Paris | **HÔPITAL DE QUINCY**, Quincy-sous-Sénart | **MUSÉE DE CLAMECY**, Clamecy | **CLARINS**, Neuilly-sur-Seine | **DIOR**, Paris | **SHANGHAI HOTEL**, Hong Kong | **CRÉDIT LYONNAIS**, Geneva

**HÔTEL D'AUBUSSON**, Paris | **SAUDIA AMERICANBANK**, Paris | **LIBRAIRIE RMN, CITÉ DE LA MUSIQUE**, Paris | **TOUR SOCIÉTÉ GÉNÉRALE**, La Défense | **RATP**, Paris | **HÔTEL LA VILLA**, Paris | **CHRISTIAN LACROIX**, Paris | **ARTEMIS**, Paris | **VIVENDI**, Paris | **YVES ROCHER**, Paris | **JEAN-PAUL GAULTIER**, Paris, New York | **COCA-COLA**, Issy-les-Moulineaux | **SHISEIDO**, Paris | **CARTIER**, Paris | **CHAUMET**, Paris | **ROLEX**, Geneva, Basel, New York, Singapore, London, Madrid | **DRUGSTORE PUBLICIS CHAMPS-ÉLYSÉES**, Paris | **MUSÉE BACCARAT**, Paris | **HÔTEL DE NOAILLES**, Paris | **BOUTIQUE BREGUET**, Paris, Moscow, Singapore | **CLUB MED**, Paris | **BOUTIQUE HERMÈS**, Paris, Athens | **HERMÈS SIÈGE SOCIALE**, Paris | **BUREAUX HERMÈS**, London | **MAISON HERMÈS**, Dosan, Korea | **BOUTIQUE BOUCHERON**, Paris | **BOUTIQUE BOODLES**, London | **JAPAN TOBACCO INTERNATIONAL**, Geneva | **HÔTEL PLAZA ATHÈNÉE**, Paris | **CAISSE NATIONALE D'ÉPARGNE**, Paris | **GROUPE SCOLAIRE FRONT DE SEINE**, Levallois-Peret | **UNITÉ DE NITRIFICATION SEINE AVAL SIAAP**, Achères | **YVES SAINT LAURANT**, Paris | **BUNGALOW 8**, London | **MUSÉE DES ARMÉES - HÔTEL DES INVALIDES - HISTORIAL CHARLES DE GAULLE**, Paris | **BOUTIQUE FAUCHON**, Paris | **ANNE FONTAINE**, Paris | **AGENCES VALODE & PISTRE**, Paris | **MAISON DE L'ÉCRITURE - FONDATION JAN MICHALSKI**, Montricher, Switzerland | **PARLY 2**, Le Chesnay | **LE BON MARCHÉ**, Paris | **CHÂTEAU DE BEYCHEVELLE**, Saint-Julien-Beychevelle | **CHÂTEAU MOUTON ROTHSCHILD**, Pauillac | **GRIMALDI FORUM**, Monaco | **TOUR LVMH**, New York | **ÉGLISE DE LA ROQUETTE**, Paris | **SIÈGE SOCIAL M6**, Paris | **GARE TGV**, Nancy | **HARRODS**, London | **CHANEL / STUDIO KARL LAGERFELD**, Paris



99, rue Molière - 94200 Ivry-sur-Seine - France - tel : +33 (0)1 71 33 05 05 - fax : +33 (0)1 71 33 05 00  
tech.trans@wanadoo.fr - www.techniques-transparentes.com